

# FIRE MALLEABLE IRON PIPE FITTING



**CONTACT US**

0921-341-5401

[sales@nxphil.com.ph](mailto:sales@nxphil.com.ph)

B14 L4 Unit 2 Varisha Building, Silcas Village Brgy. San Francisco, Binan, Laguna

# Certificate

## CERTIFICATE OF COMPLIANCE

Certificate Number: 20180313-EX27773  
Report Reference: EX27773-20180310  
Issue Date: 2018-March-13

Issued to: Leyon Piping System Co., Ltd.  
Suite 401 Building D No. 265 Meiqiang RD Minhang  
District 201104 Shanghai, CHINA

This is to certify that representative samples of **FITTINGS, CAST IRON, DUCTILE IRON, MALLEABLE IRON AND BRONZE**

Fittings, Cast Iron, Ductile Iron, Malleable Iron Fittings  
Model - 90, 92, 90R, 120, 130, 130R, 130A, 130C, 180, 180R, 241, 270, 240, 529-280, 291, 301, 121, 220, 221, 130S, 130T, 300, 80S

Have been investigated by UL in accordance with the Standard(s) indicated on this Certificate.

Standard(s) for Safety: EN 10242 - Threaded Pipe Fittings in Malleable Cast Iron  
ASME B16.3 - Malleable Iron Threaded Fittings  
ASME B16.14 - Ferrous Pipe Plugs, Bushings, and Locknuts with Pipe Threads

Additional Information: See the UL Online Certifications Directory at [www.ul.com/database](http://www.ul.com/database) for additional information

Only those products bearing the UL Certification Mark should be considered as being covered by UL's Certification and Follow-Up Service.

Look for the UL Certification Mark on the product.

*Samuel*  
UL  
UL Solutions, 330 South Dearborn Street, Chicago, IL 60606, USA  
Any reproduction or distribution of this document without the express written permission of UL Solutions is prohibited. Please contact UL Customer Support at [cert@ul.com](mailto:cert@ul.com) for additional information.



## CERTIFICATE OF COMPLIANCE

Certificate Number: 20221019-EX28919  
Report Reference: EX28919-20221019  
Issue Date: 2022-October-19

Issued to: SGF ENERGY ENGINEERING TECH. INC.  
1201 N Orange St Ste 600  
Wilmington, DE 19801-1171  
United States

This is to certify that representative samples of **FITTINGS, WELDED OUTLET**

Models: Have been investigated by UL in accordance with the Standard(s) indicated on this Certificate.

Standard(s) for Safety: UL 213B WELDED OUTLET FITTINGS FOR FIRE PROTECTION

Additional Information: See the UL Online Certifications Directory at [www.ul.com/database](http://www.ul.com/database) for additional information

Only those products bearing the UL Certification Mark should be considered as being covered by UL's Certification and Follow-Up Service.

Look for the UL Certification Mark on the product.

*Samuel*  
UL  
UL Solutions, 330 South Dearborn Street, Chicago, IL 60606, USA  
Any reproduction or distribution of this document without the express written permission of UL Solutions is prohibited. Please contact UL Customer Support at [cert@ul.com](mailto:cert@ul.com) for additional information.



# Malleable Iron Pipe Fittings

## BS/DIN Standard

## American Standard

Material: BS/DIN EN-1562 ASTM A197/A197M

Dimensions: BS/DIN EN-10242 ASME B16.3 B16.14 B16.39

Threads: ISO 7-1 ASME B1.20.1

Size Available: 1/8"-8"





# Malleable Iron Pipe Fittings

This is applied to the pipe connection which-working convey liquid such as water, gas, oil, steam etc.

Surface Treatment:  
Native Black, Hot Dip Galvanizing, Electro-Galvanizing, Painting, Spraying

Executive Standard:

International standard: ISO 5922/ISO 049/ISO 7-1, ISO 228

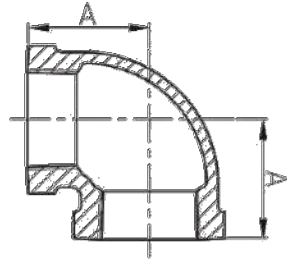
EU standard:EN 1562:1997/EN 10242:2003

German Standard:DIN 2950/1692/2999

American Standard:ANSI/ASTM A197/A197M ANSI/ASME  
B16.3, B16.14, B16.39

90

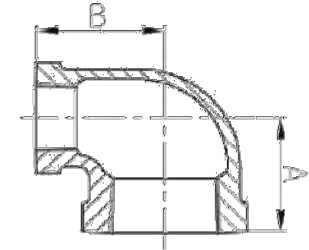
90° Elbow



Size	Inch	1/8	1/4	3/8	1/2	3/4	1	1 1/4
	mm	6	8	10	15	20	25	32
Dim. (mm)	A	19	21	25	28	33	38	45
Size	Inch	1 1/2	2	2 1/2	3	4	5	6
	mm	40	50	65	80	100	125	150
Dim. (mm)	A	50	58	69	78	96	115	131

90R

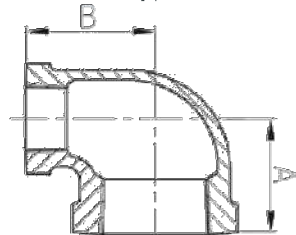
Reducing Elbow



Size	Inch	4X1 1/4	4X1 1/2	4X2	4X2 1/2	4X3	
	mm	100X32	100X40	100X50	100X65	100X80	
Dim. (mm)	A	60	62	68	77	82	
	B	85	85	86	89	90	
Size	Inch	3X4X1/2	3X1/4	1X3/8	1X1/2	1X3/4	
	mm	10X15	25X8	25X10	25X15	25X20	
Dim. (mm)	A	30	27	30	32	35	
	B	31	31	32	34	36	

90R

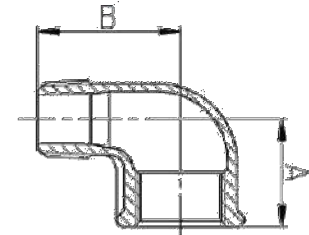
Reducing Elbow



Size	Inch	3X8X1/8	3/8X1/4	6X4	1/2X1/4	1/2X3/8	
	mm	10X6	10X8	150X100	15X8	15X10	
Dim. (mm)	A	20.5	23	102	24	26	
	B	85	83	125	34	28	
Size	Inch	1 1/4X3/8	1 1/4X1/2	1 1/4X3/4	1 1/4X1	1 1/2X1/2	
	mm	32X10	32X15	32X20	32X25	40X15	
Dim. (mm)	A	32	32	36	40	34	
	B	36.5	37	41	42	41	

92

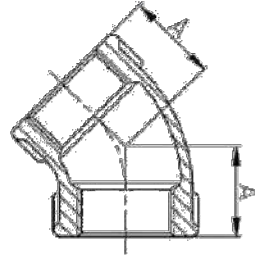
Street Elbow, 90°



Size	Inch	1/8	1/4	3/8	1/2	3/4	1	1 1/4
	mm	6	8	10	15	20	25	32
Dim. (mm)	A	19	21	25	28	33	38	45
		25	28	32	37	43	52	60
Size	Inch	1 1/2	2	2 1/2	3	4	6	
	mm	40	50	65	80	100	150	
Dim. (mm)	A	50	58	69	78	96	127.5	
		65	74	88	98	118	202	

120

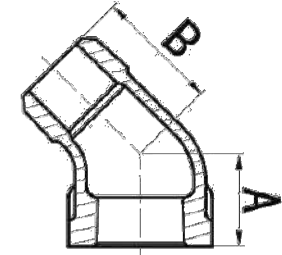
45° Elbow



Size	Inch	1/8	1/4	3/8	1/2	3/4	1	1 1/4
	mm	6	8	10	15	20	25	32
Dim. (mm)	A	19	18.5	20	22	25	28	33
	B	21	24	25	28	32	37	43
Size	Inch	1 1/2	2	2 1/2	3	4	5	6
	mm	40	50	65	80	100	125	150
Dim. (mm)	A	50	58	69	78	96	115	136
	B	55	65	78	88	108	133	161

121

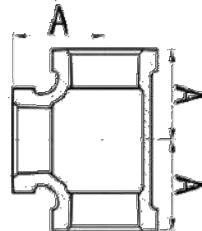
Street Elbow, 45°



Size	Inch	1/8	1/4	3/8	1/2	3/4	1
	mm	6	8	10	15	20	25
Dim. (mm)	A	16	18.5	20	22	25	28
	B	21	24	25	28	32	37
Size	Inch	1 1/4	1 1/2	2	2 1/2	3	4
	mm	32	40	50	65	80	100
Dim. (mm)	A	33	36	43	49.5	55	66
	B	43	46	55	65	76	94

130

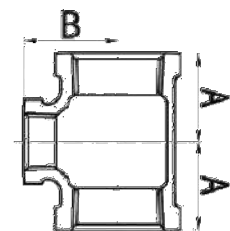
Tee



Size	Inch	1/8	1/4	3/8	1/2	3/4	1	1 1/4
	mm	6	8	10	15	20	25	32
Dim. (mm)	A	19	21	25	28	33	39	45
	B	21	24	25	28	32	37	43
Size	Inch	1 1/2	2	2 1/2	3	4		
	mm	40	50	65	80	100		
Dim. (mm)	A	50	58	69	78	96		
	B	55	65	78	88	108		

130R

Reducing Tee



Size	Inch	4X1/2	1/4	4X1	4X1 1/4	4X1 1/2	
	mm	100X15	100X20	100X25	100X32	100X40	
Dim. (mm)	A	50	53	56	60	61	
	B	79	79	81	84	84	
Size	Inch	1/4X1/8	1/2X1/4	1/2X3/8	3/4X1/4	3/4X3/8	
	mm	15X6	15X8	15X10	20X8	20X10	
Dim. (mm)	A	22	24	26	26	28	
	B	23	24	26	27	28	

130R

Reducing Tee



Size	Inch	4X2	4X2 1/2	4X3	3/8X1/4		
	mm	100X50	100X55	100X80	10X8		
Dim. (mm)	A	70	84	82	21		
	B	86	92	90	22.5		
Size	Inch	3/4X1/2	1X1/4	1X3/8	1X1/2	1X3/4	
	mm	20X15	25X8	25X10	25X15	25X20	
Dim. (mm)	A	30	28	30	31	35	
	B	31	31	32	34	36	

130R

Reducing Tee



Size	Inch	1 1/4X1X1	1 1/2X1X1	1 1/2X1 1/4X1	1 1/2X1 1/4X1 1/4
	mm	32X25X25	40X25X25	40X32X25	40X32X32
Dim. (mm)	A	40	40	41	44
	B	43	43	45	49
	C	40	39	42	42
Size	Inch	2X1X1	2X1 1/4X1	2X1 1/2X1	2X1 1/4X1 1/4
	mm	50X25X25	50X32X25	50X40X25	50X32X32
Dim. (mm)	A	41	47	45	46.4
	B	49	52	53	54
	C	41	38	40	45.2

130R

Reducing Tee



Size	Inch	2X1 1/4X1 1/2	2X1 1/2X1 1/2	2 1/2X1X2	2 1/2X1 1/4X2
	mm	50X40X40	50X40X40	65X25X50	65X32X50
Dim. (mm)	A	51	56	47	54
	B	53	52	59	60
	C	41	44	44	46
Size	Inch	2 1/2X1 1/2X2	2 1/2X2X2	3X1X2	3X3/4X2 1/2
	mm	65X40X50	65X50X50	80X25X50	80X20X65
Dim. (mm)	A	52	59	56	56.5
	B	58	63	56	58
	C	52	59	54	52.5

130R

Reducing Tee



Size	Inch	3X1X2 1/2	3X1 1/4X2 1/2	3X1 1/2X2 1/2	3X2X2
	mm	80X25X65	80X32X65	80X40X65	80X50X65
Dim. (mm)	A	57	52	55	62
	B	69	68	66	74.5
	C	52	52	53	59
Size	Inch	3X2X2 1/2	3X2 1/2X2 1/2		
	mm	80X50X65	80X65X65		
Dim. (mm)	A	57	68		
	B	67	72		
	C	57	67		

180

Cross



Size	Inch	1/8	1/4	3/8	1/2	3/4	1
	mm	6	8	10	15	20	25
Dim. (mm)	A	19	21	25	28	33	38
Size	Inch	11/4	11/2	2	21/2	3	4
	mm	32	40	50	65	80	100
Dim. (mm)	A	45	50	58	69	78	96

180R

Reducing Cross



Size	Inch	4X1	4X11/4	4X11/2	4X2	4X21/2	
	mm	100X25	100X32	100X40	100X50	100X65	
Dim. (mm)	A	56	60	61	70	84	
	B	81	84	84	85	92	
Size	Inch	11/2X1/2	11/2X3/4	11/2X1	11/2X11/4	2X3/4	
	mm	40X15	40X20	40X25	40X32	50X20	
Dim. (mm)	A	36	38	42	45	40	
	B	42	44	46	48	50	

220

Socket



Size	Inch	1/8	1/4	3/8	1/2	3/4	1	11/4
	mm	6	8	10	15	20	25	32
Dim. (mm)	A	25	27	30	36	39	45	45
Size	Inch	11/2	2	21/2	3	4		
	mm	40	50	65	80	100		
Dim. (mm)	A	55	65	74	80	94		

240

Reducing Socket



Size	Inch	4X1	4X11/4	4X11/2	4X2	4X21/2	
	mm	100X25	100X32	100X40	100X50	100X65	
Dim. (mm)	A	94	94	94	94	94	
Size	Inch	1/2X1/8	1/2X1/4	1/2X3/8	3/4X1/8	3/4X1/4	
	mm	15X6	15X8	15X10	20X6	20X8	
Dim. (mm)	A	36	36	36	39	39	



240

Reducing Socket



Size	Inch	4X3	3/8X1/8	3/8X1/4				
	mm	100X80	10X6	10X8				
Dim. (mm)	A	94	30	30				
Size	Inch	3/4X3/8	3/4X1/2	1X1/4	1X3/8	1X1/2		
	mm	20X10	20X15	25X8	25X10	25X15		
Dim. (mm)	A	39	39	45	45	45		

240

Reducing Socket



Size	Inch	1 1/4X3/8	1 1/4X1/2	1 1/4X3/4				
	mm	32X10	32X15	32X20				
Dim. (mm)	A	50	50	50				
Size	Inch	1X3/4	1 1/4X1/4	2X1	2X1 1/4	2X1 1/2		
	mm	25X20	32X8	50X25	50X32	50X40		
Dim. (mm)	A	45	50	65	65	74		

241

Bushing



Size	Inch	4X3/4	4X1	4X1 1/4	4X1 1/2	4X3		
	mm	100X20	100X25	100X32	100X40	100X80		
Dim. (mm)	A	51	51	51	51	51		
Size	Inch	1/2X3/8	3/4X1/8	3/4X1/4	3/4X3/8	3/4X1/2		
	mm	15X10	20X6	20X8	20X10	20X15		
Dim. (mm)	A	24	26	26	26	26		

241

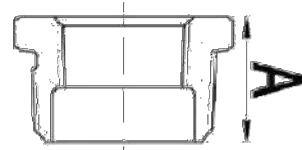
Bushing



Size	Inch	3/8X1/8	3/8X1/4					
	mm	10X6	10X8					
Dim. (mm)	A	20	20					
Size	Inch	1X1/4	1X3/8	1X1/2	1X3/4	1 1/4X3/8		
	mm	25X8	25X10	25X15	25X20	32X10		
Dim. (mm)	A	29	29	29	29	31		

241

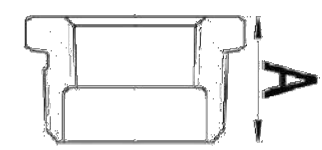
Bushing



Size	Inch	1/2X1/8	1/2X1/4	11/4X1	11/2X1/4	11/2X3/8	
	mm	15X6	15X8	32X25	40X8	40X10	
Dim. (mm)	A	24	24	31	31	31	
Size	Inch	11/4X3/4	11/4X3/4	21/2X11/2	21/2X3/4	3X2	
	mm	32X15	32X20	65X40	65X50	80X50	
Dim. (mm)	A	31	31	40	40	44	

241

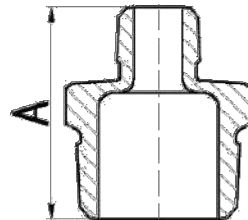
Bushing



Size	Inch	11/2X1/2	11/2X3/4	11/2X1	11/2X11/4	2X1	3X21/2
	mm	40X15	40X20	40X25	40X32	50X25	80X65
Dim. (mm)	A	31	31	31	31	35	44
Size	Inch	1/4X1/8	2X11/4	2X11/2	21/2X1/2	21/2X3/4	
	mm	8X6	50X32	50X40	65X15	65X20	
Dim. (mm)	A	20	35	35	40	40	

245

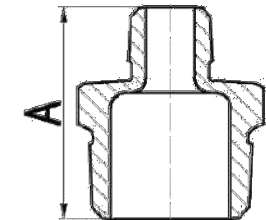
Reducing Nipple



Size	Inch	4X2	4X21/2	4X3	3/8X1/4	1/2X1/4	
	mm	100X50	100X65	100X80	16X8	15X8	
Dim. (mm)	A	87	87	87	38	44	
Size	Inch	11/4X3/4	11/4X1	11/2X1/2	11/2X3/4	11/2X1	
	mm	32X20	32X25	40X15	40X20	40X25	
Dim. (mm)	A	57	57	59	59	59	

245

Reducing Nipple



Size	Inch	1/2X3/8	3/4X1/4	3/4X3/8	3/4X1/2	1X1/2	
	mm	15X10	20X8	20X10	20X15	25X15	
Dim. (mm)	A	44	47	47	47	53	
Size	Inch	11/2X11/4	2X1/2	2X3/4	2X1	2X11/4	
	mm	40X32	50X15	50X20	50X25	50X32	
Dim. (mm)	A	59	68	68	68	68	

245

Reducing Nipple



Size	Inch	1X3/4	1 1/4X1/2	2 1/2X1 1/4	2 1/2X1 1/2	2 1/2X2	2X1 1/2
	mm	25X20	32X15	65X32	65X40	65X50	50X40
Dim. (mm)	A	53	57	75	75	75	68
Size	Inch	1/4X1/8	3/4X1/2	3X1 1/2	3X2	3X2 1/2	
	mm	8X6	65X25	80X40	80X50	80X65	
Dim. (mm)	A	31	75	83	83	83	

270

Parallel Thread Socket



Size	Inch	1/8	1/4	3/8	1/2	3/4	1	1 1/4
	mm	6	8	10	15	20	25	32
Dim. (mm)	A	25	27	30	36	39	45	50
Size	Inch	1 1/2	2	2 1/2	3	4		
	mm	40	50	65	80	100		
Dim. (mm)	A	55	65	74	80	94		

280

Nipple



Size	Inch	1/8	1/4	3/8	1/2	3/4	1	1 1/4
	mm	6	8	10	15	20	25	32
Dim. (mm)	A	29	36	38	44	47	53	57
Size	Inch	1 1/2	2	2 1/2	3	4		
	mm	40	50	65	80	100		
Dim. (mm)	A	59	68	75	83	95		

291

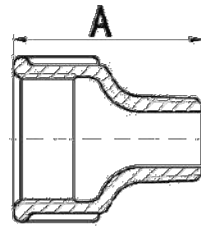
Plug



Size	Inch	1/8	1/4	3/8	1/2	3/4	1	1 1/4
	mm	6	8	10	15	20	25	32
Dim. (mm)	A	11	14	15	18	20	23	29
Size	Inch	1 1/2	2	2 1/2	3	4		
	mm	40	50	65	80	100		
Dim. (mm)	A	30	36	39	44	58		

246

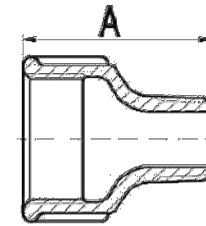
Reducing Socket M/F



Size	Inch	3/8x1/4	1/2x1/4	1/2x3/8	3/4x3/8	3/4x1/2	
	mm	10x8	15x8	15x10	20x10	20x15	
Dim. (mm)	A	35	43	43	48	48	
Size	Inch	1 1/2x1 1/4	2x1	2x1 1/4	2x1 1/2	1x1/2	
	mm	40x32	50x25	50x32	50x40	25x15	
Dim. (mm)	A	63	70	70	70	55	

246

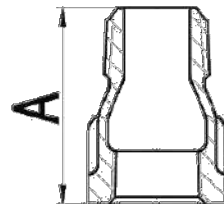
Reducing Socket M/F



Size	Inch	1x3/4	1 1/4x1/2	1 1/4x3/4	1 1/4x1	1 1/2x3/4	
	mm	25x20	32x15	32x20	32x25	40x20	
Dim. (mm)	A	55	60	60	60	63	
Size	Inch	1 1/2x1					
	mm	40x25					
Dim. (mm)	A	63					

529A

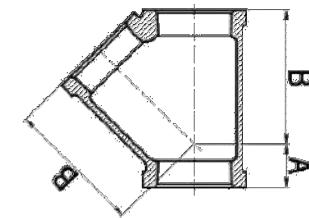
M/F Socket



Size	Inch	1/4	3/8	1/2	3/4	1	1 1/4
	mm	8	10	15	20	25	32
Dim. (mm)	A	33	35	43	48	55	60
Size	Inch	1 1/2	2	2 1/2	3	4	
	mm	40	50	65	80	100	
Dim. (mm)	A	61.5	68	76	83	97	

165

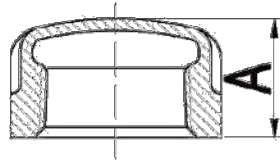
Lateral Y Branche, 45°



Size	Inch	1/2	3/4	1	1 1/4	1 1/2	2
	mm	15	20	25	32	40	50
Dim. (mm)	A	15.5	18.3	21.6	25	27.9	31.5
	B	43.4	52	61.7	74.2	83.3	99.8
Size	Inch	2 1/2	3	4			
	mm	65	80	100			
Dim. (mm)	A	38.6	43.4	51			
	B	120	141	177			

300

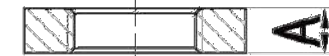
Cap



Size	Inch	1/8	1/4	3/8	1/2	3/4	1	1 1/4
	mm	6	8	10	15	20	25	32
Dim. (mm)	A	13	15	17	19	22	24	27
Size	Inch	1 1/2	2	2 1/2	3	4		
	mm	40	50	65	80	100		
Dim. (mm)	A	27	32	35	38	45		

310

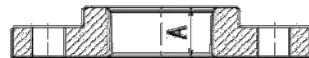
Locknut



Size	Inch	1/4	3/8	1/2	3/4	1	1 1/4
	mm	8	10	15	20	25	32
Dim. (mm)	A	6	7	8	9	10	9
Size	Inch	1 1/2	2	2 1/2	3	4	
	mm	40	50	65	80	100	
Dim. (mm)	A	12	13	16	19	23	

321P

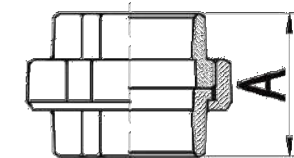
Flange



Size	Inch	1/2	3/4	1	1 1/4	1 1/2	2
	mm	15	20	25	32	40	50
Dim. (mm)	A	15	16	19	21	21	26
Size	Inch	2 1/2	3	4	5	6	
	mm	65	80	100	125	150	
Dim. (mm)	A	30	33	39	40	40	

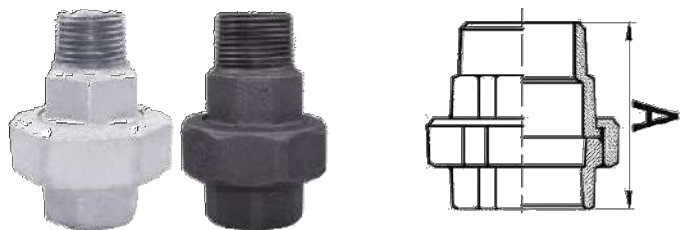
330

Union



Size	Inch	1/8	1/4	3/8	1/2	3/4	1	1 1/4
	mm	6	8	10	15	20	25	32
Dim. (mm)	A	38	42	45	48	52	58	65
Size	Inch	1 1/2	2	2 1/2	3	4	6	
	mm	40	50	65	80	100	150	
Dim. (mm)	A	70	78	85	95	100	144	

**331 Flat Seat Union M/F**



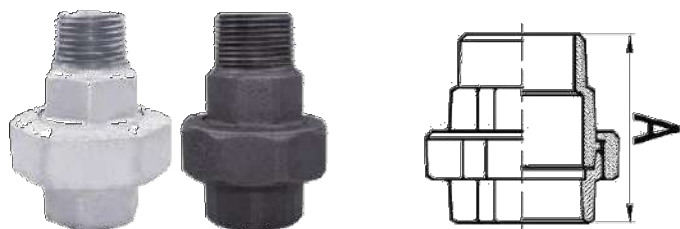
Size	Inch	1/2	3/4	1	1 1/4	1 1/2	2
	mm	15	20	25	32	40	50
Dim. (mm)	A	66	72	80	90	95	106
Size	Inch	2 1/2	3	4			
	mm	65	80	100			
Dim. (mm)	A	118	130	133			

**340 Conical Joint Union**



Size	Inch	1/8	1/4	3/8	1/2	3/4	1
	mm	6	8	10	15	20	25
Dim. (mm)	A	38	42	45	48	52	58
Size	Inch	1 1/4	1 1/2	2	2 1/2	3	4
	mm	32	40	50	65	80	100
Dim. (mm)	A	65	70	78	85	95	110

**341 Conical Joint Union M/F**



Size	Inch	1/4	3/8	1/2	3/4	1	1 1/4
	mm	8	10	15	20	25	32
Dim. (mm)	A	55	55	66	72	80	90
Size	Inch	1 1/2	2	2 1/2	3	4	
	mm	40	50	65	80	100	
Dim. (mm)	A	95	105	118	130	133	

**342 Conical Joint Union**



Size	Inch	1/8	1/4	3/8	1/2	3/4	1	1 1/4
	mm	6	8	10	15	20	25	32
Dim. (mm)	A	32	36.5	41	43.5	49.5	52.5	57.5
Size	Inch	1 1/2	2	2 1/2	3	4	6	
	mm	40	50	65	80	100	150	
Dim. (mm)	A	61	70	82	89	98	147	

**342A Double Bronze Navy Union**



Size	Inch	1/2	3/4	1	1 1/4	1 1/2	2
	mm	15	20	25	32	40	50
Dim. (mm)	A	48	52	58	65	70	78
Size	Inch						
	mm						
Dim. (mm)	A						

**1221 Side Outlet Elbow**



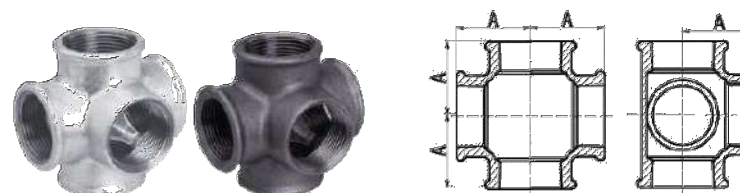
Size	Inch	1/2	3/4	1	1 1/2	2	
	mm	15	20	25	32	40	50
Dim. (mm)	A	28	33	38	45	50	58
Size	Inch						
	mm						
Dim. (mm)	A						

**1223 Side Outlet Tee**



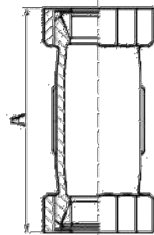
Size	Inch	1/2	3/4	1	1 1/4		
	mm	15	20	25	32		
Dim. (mm)	A	28	33	38	45		
Size	Inch						
	mm						
Dim. (mm)	A						

**1224 Side Outlet Cross**



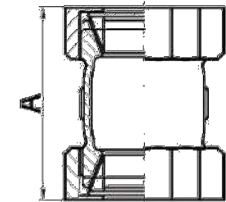
Size	Inch	1/2	3/4	1			
	mm	15	20	25			
Dim. (mm)	A	28	33	38			
Size	Inch						
	mm						
Dim. (mm)	A						

**LCC Long Compression Coupling**



Size	Inch	1/2	3/4	1	1 1/4	1 1/2	2
	mm	15	20	25	32	40	50
Dim. (mm)	A	93	101	109	114	118	121
	Size	Inch	2 1/2	3	4		
	mm	65	80	100			
Dim. (mm)	A	137	145	155			

**SCC Short Compression Coupling**



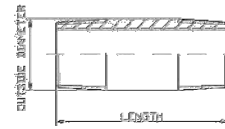
Size	Inch	1/2	3/4	1	1 1/4	2	
	mm	15	20	25	32	50	
Dim. (mm)	A	62	69	73	79	84	
	Size	Inch	2 1/2	3			
	mm	65	80				
Dim. (mm)	A	100	110				



## Carbon steel joint



Material: BS EN 10241  
Dimensions: BS EN 10241  
Threads: ISO7/1  
Schedule: Medium/Heavy

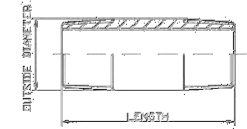


## SCC

## Stainless steel pipe fittings



Material: ASTM A312/A312M  
Dimensions: ASTM A733  
Threads: ASME B1.20.1  
Schedule: 40/80



Pipe Size		Length Close	Pipe Nipple Lengths (mm)															
DN	in	mm	30	40	50	60	80	100	120	150	180	200	250	300	350	400	450	500
6	1/8	19	X	X	X	X	X	X	X	X	X	X	X	X	X	X	X	X
8	1/4	25	X	X	X	X	X	X	X	X	X	X	X	X	X	X	X	X
10	3/8	28	X	X	X	X	X	X	X	X	X	X	X	X	X	X	X	X
15	1/2	38	X	X	X	X	X	X	X	X	X	X	X	X	X	X	X	X
20	3/4	48	X	X	X	X	X	X	X	X	X	X	X	X	X	X	X	X
25	1	58	X	X	X	X	X	X	X	X	X	X	X	X	X	X	X	X
32	1 1/4	75	X	X	X	X	X	X	X	X	X	X	X	X	X	X	X	X
40	1 1/2	85	X	X	X	X	X	X	X	X	X	X	X	X	X	X	X	X
50	2	100	X	X	X	X	X	X	X	X	X	X	X	X	X	X	X	X
60	2 1/2	120	X	X	X	X	X	X	X	X	X	X	X	X	X	X	X	X
80	3	150	X	X	X	X	X	X	X	X	X	X	X	X	X	X	X	X
100	4	180	X	X	X	X	X	X	X	X	X	X	X	X	X	X	X	X
125	5	220	X	X	X	X	X	X	X	X	X	X	X	X	X	X	X	X
150	6	250	X	X	X	X	X	X	X	X	X	X	X	X	X	X	X	X

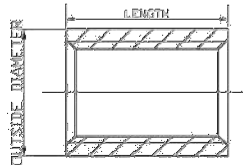
Pipe Size		Length Close	Pipe Nipple Lengths (in)															
in	in	mm	1 1/2	2	2 1/2	3	3 1/2	4	4 1/2	5	5 1/2	6	7	8	9	10	11	12
1/8	0.405	10	X	X	X	X	X	X	X	X	X	X	X	X	X	X	X	X
1/4	0.640	16	X	X	X	X	X	X	X	X	X	X	X	X	X	X	X	X
3/8	0.875	22	X	X	X	X	X	X	X	X	X	X	X	X	X	X	X	X
1/2	1.315	33	X	X	X	X	X	X	X	X	X	X	X	X	X	X	X	X
3/4	1.915	49	X	X	X	X	X	X	X	X	X	X	X	X	X	X	X	X
1	2.540	64	X	X	X	X	X	X	X	X	X	X	X	X	X	X	X	X
1 1/4	3.175	80	X	X	X	X	X	X	X	X	X	X	X	X	X	X	X	X
1 1/2	3.810	97	X	X	X	X	X	X	X	X	X	X	X	X	X	X	X	X
2	5.080	129	X	X	X	X	X	X	X	X	X	X	X	X	X	X	X	X
2 1/2	6.350	161	X	X	X	X	X	X	X	X	X	X	X	X	X	X	X	X
3	7.620	193	X	X	X	X	X	X	X	X	X	X	X	X	X	X	X	X
4	10.160	258	X	X	X	X	X	X	X	X	X	X	X	X	X	X	X	X
5	12.700	323	X	X	X	X	X	X	X	X	X	X	X	X	X	X	X	X
6	15.240	388	X	X	X	X	X	X	X	X	X	X	X	X	X	X	X	X
8	20.320	518	X	X	X	X	X	X	X	X	X	X	X	X	X	X	X	X

## Steel Merchant Coupling with American Standard



Material: ASTM A865  
Dimensions: ASTM A885  
Threads: ASME B1.20.1  
Schedule: Standard

Size	1/8"	1/8"	3/8"	1/2"	3/4"	1"	1 1/4"	1 1/2"
Full	Pipe O.D.	0.563	0.750	0.875	1.063	1.312	1.575	1.900
	Length	3/4"	1-1/8"	1-3/8"	1-7/8"	2-1/8"	2-7/8"	3-1/2"
Half	Pipe O.D.	0.563	0.750	0.875	1.063	1.312	1.575	1.900
	Length	0.230	0.230	0.331	0.709	0.748	0.925	0.965



Size	2"	3"	4"	6"	8"	10"	
Full	Pipe O.D.	2.375	3.500	4.500	6.000	6.875	7.300
	Length	2-1/8"	3-1/8"	3-7/8"	4-7/8"	5-7/8"	6-1/2"
Half	Pipe O.D.	2.375	3.500	4.500	6.000	6.875	7.300
	Length	1.051	1.490	1.555	1.834	1.673	1.940

Notes: Other lengths and size available, contact us for details

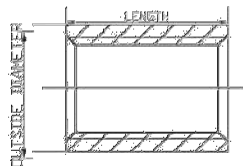


Material: ASTM A865  
Dimensions: ASTM A885  
Threads: ASME B1.20.1  
Schedule: Extra-Strong

Size	1/8"	1/8"	3/8"	1/2"	3/4"	1"	1 1/4"	1 1/2"
Standard	Pipe O.D.	0.563	0.750	0.875	1.063	1.312	1.575	1.900
	Length	1-1/8"	1-3/8"	1-7/8"	2-1/8"	2-7/8"	3-1/4"	3-7/8"

Size	2"	3"	4"	6"	8"	10"	
Standard	Pipe O.D.	2.375	3.500	4.500	6.000	6.875	7.300
	Length	2-7/8"	3-7/8"	4-3/8"	4-7/2"	5-3/8"	6-7/8"

Notes: Other lengths and size available, contact us for details

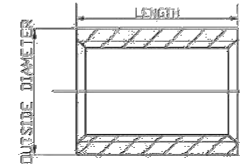


## Steel Socket with British/Din Standard



Material: BS EN 10241  
Dimensions: BS EN 10241  
Threads: ISO 7/1  
Schedule: Medium

Size	6"	8"	10"	15"	20"	25"	32"
Standard	Pipe O.D.	150	200	213	266	318	423
	Length	17	25	35	54	76	98
Half	Pipe O.D.	15	25	32	37	38.5	48
	Length	8	11	12	16	19	25



Size	40"	50"	65"	80"	100"	125"	150"
Standard	Pipe O.D.	54.5	66	82	100	121.4	150
	Length	48	59	65	72	83	92
Half	Pipe O.D.	56	66	81	98	124	150
	Length	25	30	30	40	44	44

Notes: Other lengths and size available, contact us for details

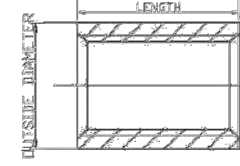


Material: BS EN 10241  
Dimensions: BS EN 10241  
Threads: ISO 7/1  
Schedule: Heavy

Size	6"	8"	10"	15"	20"	25"	32"
Standard	Pipe O.D.	150	200	213	266	318	423
	Length	17.6	27.0	28.0	37.0	39.0	46.0

Size	40"	50"	65"	80"	100"	125"	150"
Standard	Pipe O.D.	54.5	66	82	100	121.4	150
	Length	51.0	58.0	69.0	75.0	87.0	95.0

Notes: Other lengths and size available, contact us for details



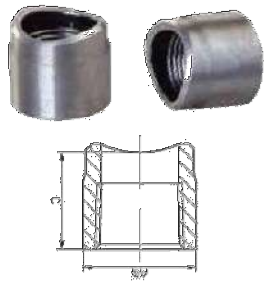
## Steel Nipple-Tank Type

### Steel Nipple-Tank Type



Size	Length (mm)	Weight (kg)	Weight (lb)	Weight (oz)	End	End
1/2x100x2MM	100	18	92	21.3	R1/2	G1/2
3/4x100x2MM	100	25	127	32.0	R3/4	G3/4
1x100x2MM	100	37	182	45.4	R1	G1
1 1/2x100x2MM	100	58	282	71.0	R1 1/2	G1 1/2
2x100x2MM	100	90	425	107.0	R2	G2

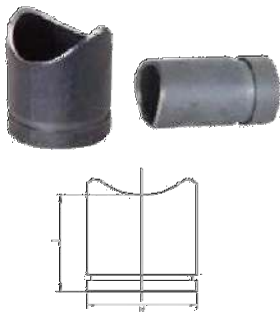
### Threaded Welded Outlet



Material: ASTM A106  
Threads: ASME B1.20.1, ISO 7/1

Size	End	1/2	1	1 1/2	2	2 1/2	3	4
Weight (kg)	R	1104	1174	1275	1405	1568	1768	1995
Weight (lb)	R	2435	2588	2815	3100	3458	3900	4399
Weight (oz)	R	1069	1148	1234	1356	1475	1617	1790

### Grooved Welded Outlet



Material: ASTM A53  
Groove: AWWA C606 and ISO 6162-12

Size	End	1 1/4	2	3	4	6	8
Weight (kg)	R	1174	1405	1768	2168	2815	3500
Weight (lb)	R	2588	3100	3900	4775	6175	7725
Weight (oz)	R	2435	2915	3700	4500	5725	7175

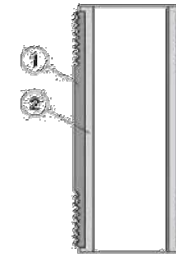
## Steel Dielectric Nipple

### Steel Dielectric Nipple



Threaded X Threaded

Nominal Dia. (Inches)	Length (Inches)	Max. Working Press. (PSI/MPa)	End to End (Inches)	Approx. Weight (kg)
1/2	0.848	300 / 2065	2-1/2	0.15 / 0.07
1/2	0.848	300 / 2065	3	0.18 / 0.08
3/4	1.050	300 / 2065	2	0.15 / 0.07
3/4	1.050	300 / 2065	2-1/2	0.20 / 0.09
3/4	1.050	300 / 2065	3	0.24 / 0.11
3/4	1.050	300 / 2065	4	0.24 / 0.15
1	1.315	300 / 2065	2-1/2	0.27 / 0.12
1	1.315	300 / 2065	3	0.24 / 0.15
1	1.315	300 / 2065	4	0.28 / 0.12
1-1/4	1.650	300 / 2065	4	0.45 / 0.20
1-1/2	1.980	300 / 2065	4	0.78 / 0.35
2	2.375	300 / 2065	4	1.06 / 0.48
2-1/2	2.875	300 / 2065	6	2.47 / 1.12
3	3.500	300 / 2065	6	3.23 / 1.47
3-1/2	4.000	300 / 2065	6	3.50 / 1.77
4	4.500	300 / 2065	6	4.81 / 2.10



#### Material Specifications:

- Body: Carbon steel pipe to ASTM A-53 type E, zinc electroplated.
  - Liner: Polypropylene (PP) plastic
- Dimension: ASTM A733
  - Thread: ASME B1.20.1
  - Working Pressure: 300 psi
  - Temperature Range: 32°F to 230°F
- Plastic-lined steel nipples act as an insulator to prevent destructive electrolytic corrosion between dissimilar metals.
- Crosslinked polyethylene (PEK) plastic, and polyethylene (PE) plastic available when ask.
  - Meets NSF / ANSI 373 lead free requirement