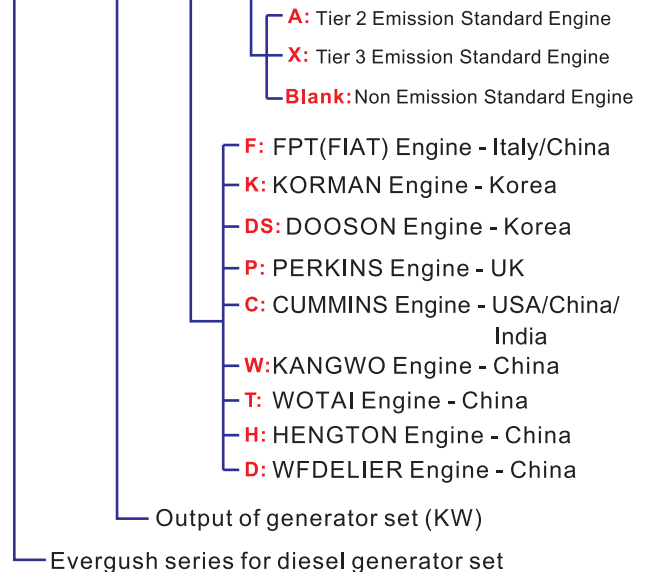


Model Code

EG-100-F-A



Features

- The whole generator set includes diesel engine, alternator and control panel. It is mounted on a steel base.
- The alternator and diesel engine are in direct connection on a mounting frame. It conforms to international standards.
- It has automatic prevention and warning devices, such as high water temperature, low oil pressure, over speed, starteroverrun,...etc.
- The generator adopts "STAMFORD" type, brushless, single bearing alternator. It is simple to operate and easy for maintenance.
- The alternator stator and rotor winding are made of insulation class H. The IP protection class is Ip23. It can provide high thermal conductivity, moisture-resistant, heat-resistant and pressure-resistant features. It also has robust structure and compact design.
- The generator comes with electronic type automatic voltage regulator(AVR), from no load to full load voltage frequency variation within $\pm 1\%$, maintaining output voltage stability.
- The soundproof type gen. set has lower level of vibration and noise compare with similar products. The engine and alternator are using SAE standard connection which can ensure high concentricity and low vibration.
- The generator output voltage is adjustable according to customer demand.
- The engine brand is selectable upon customer demand.

Standard Equipment

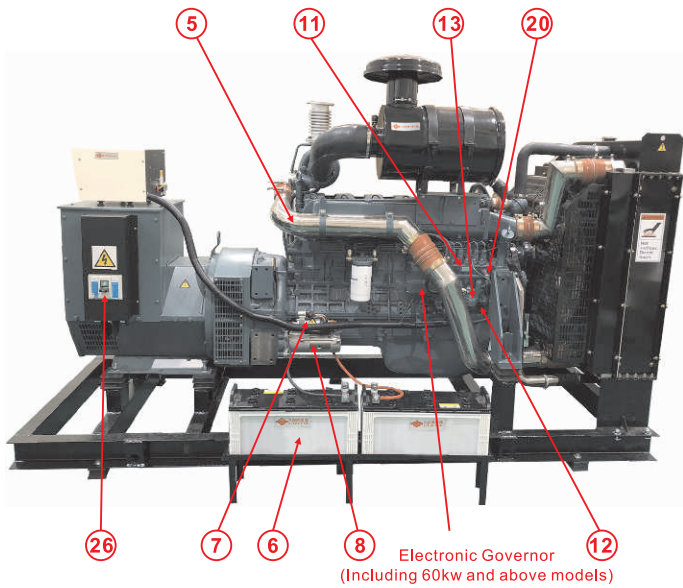
- Diesel engine 、 Alternator
- Digital control panel(controller :HGM1790N)
- Build-in battery charger
- Steel made base
- Battery
- Industrial type muffler
- Flexiable joint & anti-vibration rubber pads
- Fuel tank
- Installation & maintenance manual
- Engine import certificate, certificate of origin and warranty certificate.

Selectable Equipment

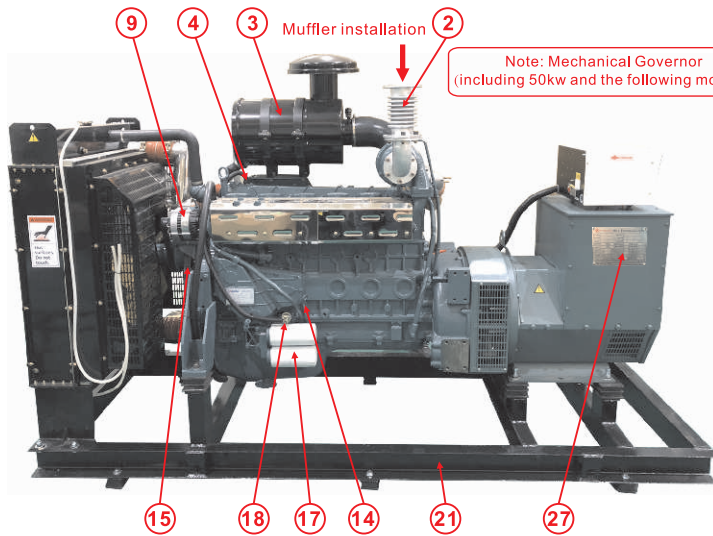
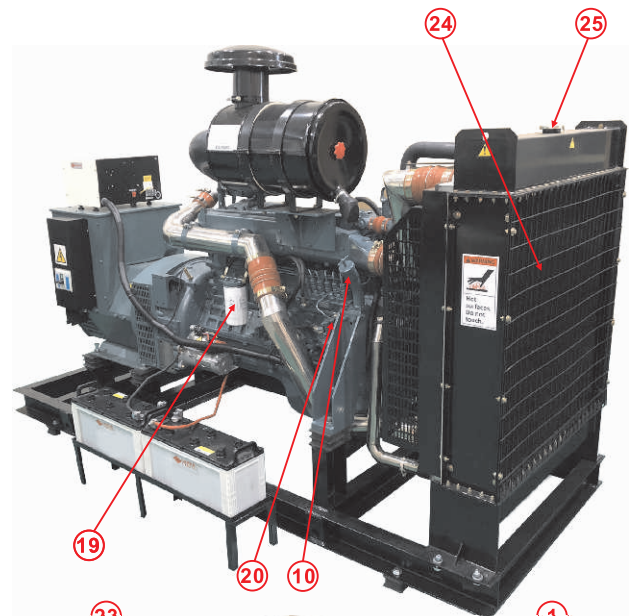
- Intelligent control panel(controller :DSE7320)
- Externally battery charger(equalizing charge/float charge)
- Automatic Transfer Switches(ATS)
- Residential/Quiet/Hospital type muffler
- Base spring mounts
- Stainless steel fuel tank
- Automatic parallel operation system
- Rainproof casing 、 Soundproof casing
- Diesel particulate filter

Structure

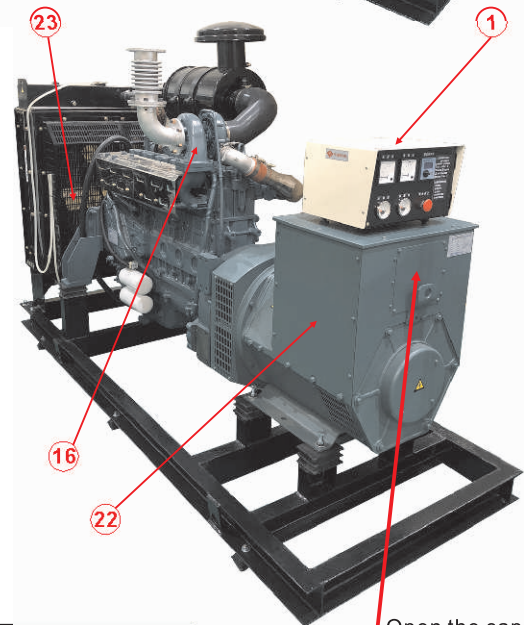
(KoreaKORMAN engine as an example)



Electronic Governor
(Including 60kw and above models)



Note: Mechanical Governor
(including 50kw and the following models)



All Pictures shown are for illustration purpose only.

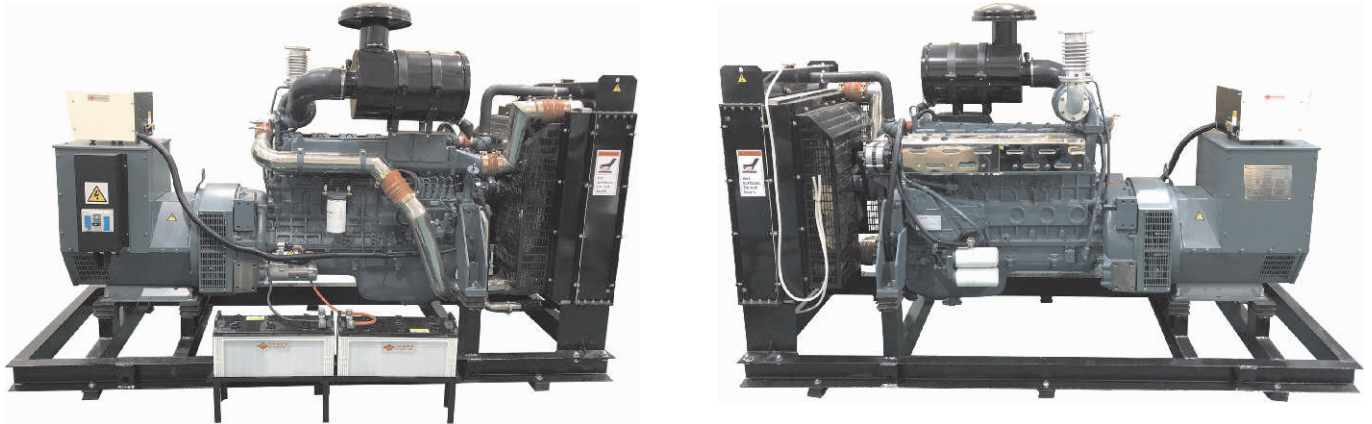
Open the cap



AVR
Automatic voltage regulator

NO	NAME	NO	NAME	NO	NAME
1	Control Panel	10	Lubrication Hole	19	Fuel Filter
2	Exhaust Pipe	11	Fuel Injection Pump	20	Fuel Return Hole
3	Air Cleaner	12	Fuel inlet Hole	21	Base
4	Water Temp. Sensor	13	Fuel Feed Pump	22	Alternator
5	Intake Pipe	14	Oil Gauge	23	Cooling Fan
6	Battery	15	Solenoid Valve	24	Radiator
7	Solenoid Valve	16	RPM Adjusting Button	25	Radiator Cap
8	Starter Motor	17	Lubrication Filter	26	Molded Case Circuit Breaker
9	Alternator for Battery	18	Lubrication Pressure Sensor	27	EVERGYSH NamePlate

Spec. Table



All Pictures shown are for illustration purpose only.

Gen. Set Model	EG-30-K	EG-40-K	EG-50-K	EG-60-K	EG-80-K	EG-100-K
Engine Model	4KMY-40	4KMY-60A	4KMD-75	4KMD-110	6KMD-140	6KMD-150
Gen. Set Power (kW/kVA)	30 kW 37.5 kVA	40 kW 50 kVA	50 kW 62.5 kVA	60 kW 75 kVA	80 kW 100 kVA	100 kW 125 kVA
Frequency/R.P.M.	60 Hz 1800 rpm					
Engine Power	40 kW 54 HP 54 PS	58 kW 78 HP 79 PS	68 kW 91 HP 92 PS	92 kW 123 HP 125 PS	115 kW 154 HP 156 PS	125 kW 168 HP 170 PS
No. of Cylinders	L-4				L-6	
Aspiration	Naturally aspirated	Turbocharged		Turbo & Intercooler		
Speed Regulation	Mechanical type			Electronic type		
Cooling	Fan cooled radiator					
Displacement(L)	3.9	4.6	4.6	4.7	6.5	6.5
Fuel consumption(L/h)	11.8	17.0	19.8	24.0	33.2	34.4
Gen. set diesel Consumption(L/h)	11.3	14.4	17.5	18.5	27.6	32.2
Starting voltage	12 V			24 V		
Battery type	120 Ah x 1			120 Ah x 2		
Length(mm)	1600	1850	1850	2000	2400 (3100) {3100}	2400
Width(mm)	600	725	750	800	855 (1200) {1200}	855
Height(mm)	1150	1225	1225	1300	1500 (1580) {2180}	1450
Approx. Weight(kg)	600	850	930	1000	1250 (2250) {2250}	1300

※Speed regulation: optional solid-state electronic governor

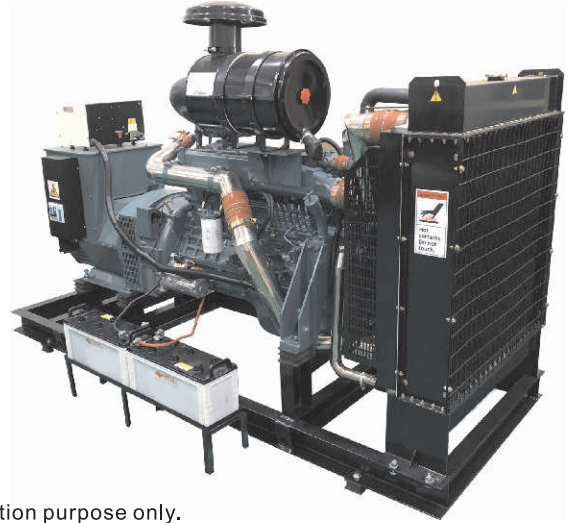
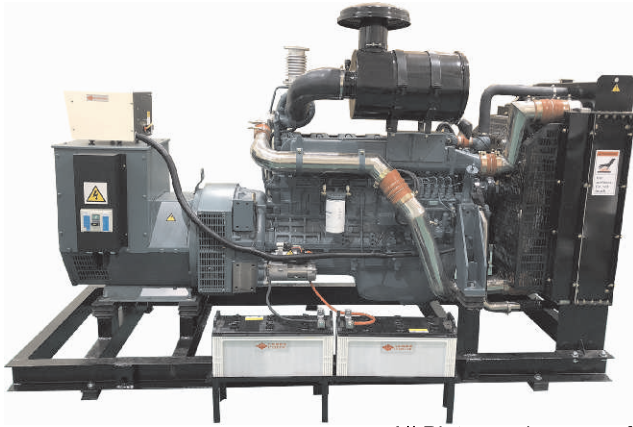
(The frequency variation rate is within ±3% and within ±0.25% under steady load.)

※Length × Width × Height × Unit weight () indicates the data of installing soundproof generator canopy.

※Length × Width × Height × Unit weight [] indicates the data of installing rainproof generator canopy.

※Length × Width × Height × Unit weight { } indicates the data of installing soundproof and rainproof generator canopy.

Spec. Table



All Pictures shown are for illustration purpose only.

Gen. Set Model	EG-125-K	EG-150-K	EG-175-K	EG-200-K	EG-200A-K	EG-250-K
Engine Model	6KMD-180	6KMD-235A	6KMD-235A	6KMD-275	6KMD-275A	6KMD-310A
Gen. Set Power (kW/kVA)	125 kW 156.25 kVA	150 kW 187.5 kVA	175 kW 218.75 kVA	200 kW 250 kVA	200 kW 250 kVA	250 kW 312.5 kVA
Frequency/R.P.M.	60 Hz 1800 rpm					
Engine Power	155 kW 208 HP 211 PS	215 kW 288 HP 292 PS	215 kW 288 HP 292 PS	265 kW 355 HP 360 PS	265 kW 355 HP 360 PS	300 kW 402 HP 408 PS
No. of Cylinders	L-6					
Aspiration	Turbo & Intercooler					
Speed Regulation	Electric Type: The frequency variation rate is within $\pm 3\%$ and within $\pm 0.25\%$ under steady load.					
Cooling	Fan cooled radiator					
Displacement(L)	7.1	9.7				
Fuel consumption(L/h)	41.8	55.0	55.0	67.7	67.5	67.5
Gen. set diesel Consumption(L/h)	38.8	45.2	44.1	58.1	58.4	63.5
Starting voltage	24 V					
Battery type	120 Ah x 2					
Length(mm)	2400 (3100)	2800	2800	2800	2800	3000
Width(mm)	855 (1200)	1060	1060	1060	1060	1250
Height(mm)	1450 (1580)	1800	1800	1740	1800	1800
Approx. Weight(kg)	1360 (1460)	1800	1950	1750	1950	2300

※Speed regulation: optional solid-state electronic governor

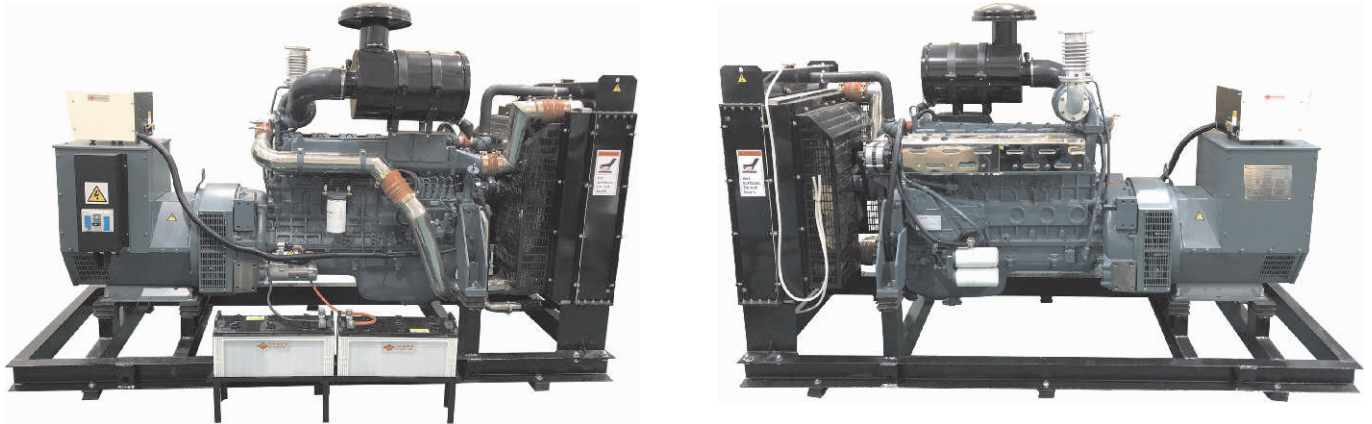
(The frequency variation rate is within $\pm 3\%$ and within $\pm 0.25\%$ under steady load.)

※Length × Width × Height × Unit weight () indicates the data of installing soundproof generator canopy.

※Length × Width × Height × Unit weight [] indicates the data of installing rainproof generator canopy.

※Length × Width × Height × Unit weight { } indicates the data of installing soundproof and rainproof generator canopy.

Spec. Table



All Pictures shown are for illustration purpose only.

Gen. Set Model	EG-750-K	EG-800-K	EG-900-K	EG-1000-K	EG-1500-K	~ to be continued ~
Engine Model	16KMV-880	16KMV-995	16KMV-1090	16KMV-1160	12KMG-1665	
Gen. Set Power (kW/kVA)	750 kW 937.5 kVA	800 kW 1000 kVA	900 kW 1125 kVA	1000 kW 1250 kVA	1500 kW 1875 kVA	
Frequency/R.P.M.	60 Hz 1800 rpm					
Engine Power	875 kW 1173 HP 1189 PS	965 kW 1294 HP 1311 PS	1020 kW 1367 HP 1386 PS	1110 kW 1488 HP 1508 PS	1665 kW 2232 HP 2262 PS	
No. of Cylinders	V-16				V-12	
Aspiration	Turbo & Intercooler					
Speed Regulation	Electric Type: The frequency variation rate is within $\pm 3\%$ and within $\pm 0.25\%$ under steady load.					
Cooling	Fan cooled radiator					
Displacement(L)	29.2				53.1	
Fuel consumption(L/h)	223.6	246.5	260.6	283.5	392.0	
Gen. set diesel Consumption(L/h)	211.1	224.1	250.5	254.9	382.2	
Starting voltage	24 V					
Battery type	210 Ah x 2			210 Ah x 4		
Length(mm)	4300	4300	4300	4400	5400	
Width(mm)	2140	2140	2000	2140	2200	
Height(mm)	2240	2240	2230	2400	3000	
Approx. Weight(kg)	5050	5050	5252	5750	10200	

※Speed regulation: optional solid-state electronic governor

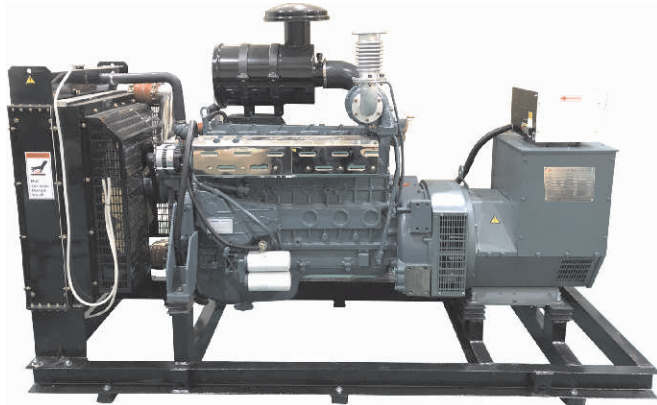
(The frequency variation rate is within $\pm 3\%$ and within $\pm 0.25\%$ under steady load.)

※Length × Width × Height × Unit weight () indicates the data of installing soundproof generator canopy.

※Length × Width × Height × Unit weight [] indicates the data of installing rainproof generator canopy.

※Length × Width × Height × Unit weight { } indicates the data of installing soundproof and rainproof generator canopy.

Spec. Table



All Pictures shown are for illustration purpose only.

Gen. Set Model	EG-300-K	EG-350-K	EG-400-K	EG-450-K	EG-500A-K	EG-600-K
Engine Model	6KMD-358S	8KMV-415	8KMV-505	8KMV-530	12KMV-645	12KMV-695
Gen. Set Power (kW/kVA)	300 kW 375 kVA	350 kW 437.5 kVA	400 kW 500 kVA	450 kW 562.5 kVA	500 kW 625 kVA	600 kW 750 kVA
Frequency/R.P.M.	60 Hz 1800 rpm					
Engine Power	347 kW 465 HP 471 PS	405 kW 543 HP 550 PS	480 kW 643 HP 652 PS	515 kW 690 HP 700 PS	627 kW 840 HP 852 PS	682 kW 914 HP 927 PS
No. of Cylinders	V-6	V-8			V-12	
Aspiration	Turbo & Intercooler					
Speed Regulation	Electric Type: The frequency variation rate is within $\pm 3\%$ and within $\pm 0.25\%$ under steady load.					
Cooling	Fan cooled radiator					
Displacement(L)	11.6	14.6			21.9	
Fuel consumption(L/h)	88.2	103.5	122.6	121.1	160.2	174.1
Gen. set diesel Consumption(L/h)	84.9	101.8	115.0	118.1	145.0	171.3
Starting voltage	24 V					
Battery type	120 Ah x 2				210 Ah x 2	
Length(mm)	3000	3000(4300)	3000	3100	3340	3405
Width(mm)	1250	1250(1600)	1250	1250	1410	1380
Height(mm)	1800	1800(2150)	1800	1800	1970	2050
Approx. Weight(kg)	2500	2700(4700)	2900	3000	3800	4000

※Speed regulation: optional solid-state electronic governor

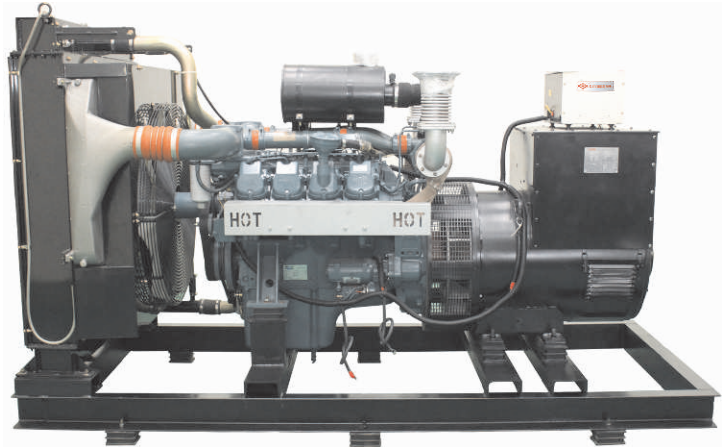
(The frequency variation rate is within $\pm 3\%$ and within $\pm 0.25\%$ under steady load.)

※Length × Width × Height × Unit weight () indicates the data of installing soundproof generator canopy.

※Length × Width × Height × Unit weight [] indicates the data of installing rainproof generator canopy.

※Length × Width × Height × Unit weight { } indicates the data of installing soundproof and rainproof generator canopy.

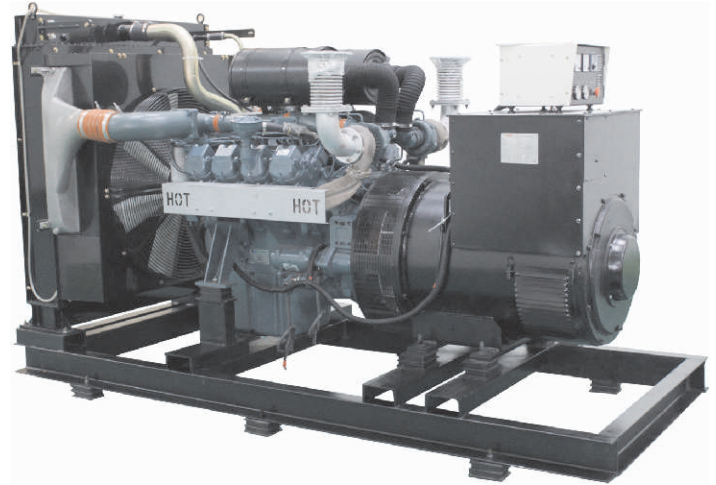
Spec. Table



All Pictures shown are for illustration purpose only.

Gen. Set Model	EG-80A-DS	EG-100-DS	EG-125-DS	EG-150-DS	EG-150A-DS	EG-200-DS	EG-250-DS
Engine Model	D1146	D1146T	D1146T	DP086TA	P086TI-1	P086TI	P126TI
Gen. Set Power (kW/kVA)	80 kW 100 kVA	100 kW 125 kVA	125 kW 156 kVA	150 kW 187.5 kVA	150 kW 187.5 kVA	200 kW 250 kVA	250 kW 312.5 kVA
Frequency/R.P.M.	60 Hz 1800 rpm						
Engine Power	105 kW 141 HP 143 PS	149 kW 200 HP 202 PS	149 kW 200 HP 202 PS	187 kW 251 HP 254 PS	191 kW 256 HP 260 PS	223 kW 299 HP 303 PS	298 kW 399 HP 405 PS
No. of Cylinders	L-6						
Aspiration	Naturally aspirated	Turbocharged			Turbo & Intercooler		
Speed Regulation	Mechanical type		Electric Type: The frequency variation rate is within $\pm 3\%$ and within $\pm 0.25\%$ under steady load.				
Cooling	Fan cooled radiator						
Displacement(L)	8.071	8.071	8.071	8.071	8.071	8.071	11.051
Fuel consumption(L/h)	26.6	37.9	37.9	45.8	46.7	56.8	76.5
Gen. set diesel Consumption(L/h)	24.5	30.0	36.9	42.2	42.2	57.4	72.1
Starting voltage	24 V						
Battery type	120 Ah x 2						
Length(mm)	2400	2400	2400	2750	2750	2750	3000
Width(mm)	850	850	850	1000	1000	900	1000
Height(mm)	1365	1360	1400	1750	1550	1560	1600
Approx. Weight(kg)	1300	1100	1450	1600	1600	1750	2300

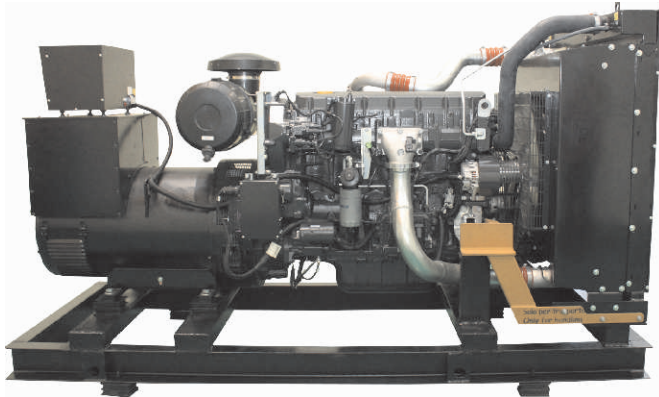
Spec. Table



All Pictures shown are for illustration purpose only.

Gen. Set Model	EG-300-DS	EG-350-DS	EG-400-DS	EG-450-DS	EG-500-DS	~ to be continued ~	~ to be continued ~	
Engine Model	P126TI-II	P158LE-1	P158LE	DP158LC	DP158LD			
Gen. Set Power (kW/kVA)	300 kW 375 kVA	350 kW 437.5 kVA	400 kW 500 kVA	450 kW 562.5 kVA	500 kW 625 kVA			
Frequency/R.P.M.	60 Hz 1800 rpm							
Engine Power	342 kW 458 HP 465 PS	402 kW 539 HP 546 PS	458 kW 614 HP 622 PS	513 kW 688 HP 697 PS	556 kW 745 HP 756 PS			
No. of Cylinders	L-6	V-8						
Aspiration	Turbo & Intercooler							
Speed Regulation	Electric Type: The frequency variation rate is within $\pm 3\%$ and within $\pm 0.25\%$ under steady load.							
Cooling	Fan cooled radiator							
Displacement(L)	11.051	14.618	14.618	14.618	14.618			
Fuel consumption(L/h)	89.5	101.0	118.6	123.8	139.6			
Gen. set diesel Consumption(L/h)	87.2	100.1	116.6	121.2	139.0			
Starting voltage	24 V							
Battery type	120 Ah x 2				210 Ah x 2			
Length(mm)	3000	3100	3100	3100	3100			
Width(mm)	1000	1300	1300	1300	1300			
Height(mm)	1600	1850	1800	1850	1800			
Approx. Weight(kg)	2480	2600	2750	3100	3300			

Spec. Table



All Pictures shown are for illustration purpose only.

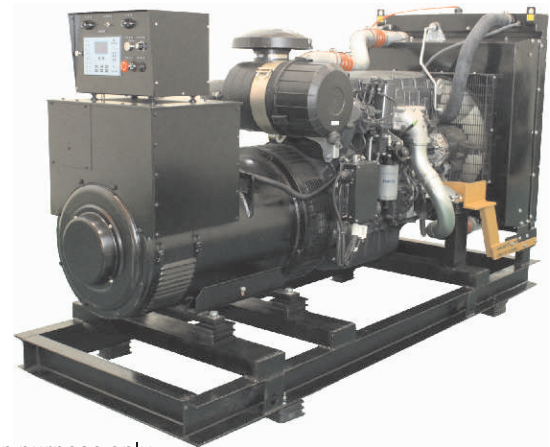
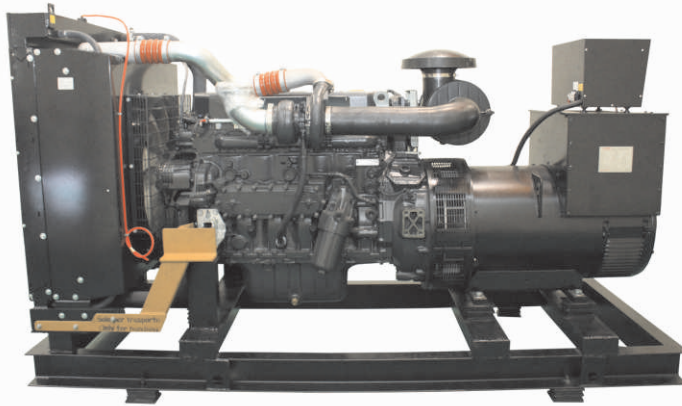
Gen. Set Model	EG-50-F	EG-100-F	EG-150-F	EG-175-F	EG-200-F	EG-250-F
Engine Model	N45AM2	N45TM3	N67TM4	N67TM7	N67TM7	C87TE3
Gen. Set Power (kW/kVA)	50 kW 62.5 kVA	100 kW 125 kVA	150 kW 187.5 kVA	175 kW 218.75 kVA	200 kW 250 kVA	250 kW 312.5 kVA
Frequency/R.P.M.	60 Hz 1800 rpm					
Engine Power	56.8 kW 76 HP 77 PS	125 kW 168 HP 170 PS	194.5 kW 261 HP 264 PS	222.5 kW 298 HP 302 PS	222.5 kW 298 HP 302 PS	280 kW 375 HP 380 PS
Tier of Emission Standard	Non					
No. of Cylinders	L-4			L-6		
Aspiration	Naturally aspirated	Turbocharged air to air aftercooled				
Speed Regulation	Mechanical type					Microcomputer control (Common rail direct)
Cooling	Fan cooled radiator					
Displacement(L)	4.5		6.7			8.7
Fuel consumption(L/h)	14.8	29.4	44.2	50.0	50.0	65.6
Gen. set diesel Consumption(L/h)	14.7	25.8	39.1	37.7	49.6	65.3
Starting voltage	12 V					24 V
Battery type	120 Ah x 1					120 Ah x 2
Length(mm)	1800	2000	2500	2500	2500	2800 (3900)
Width(mm)	750	800	750	750	750	1050 (1300)
Height(mm)	1225	1300	1440	1450	1450	1650 (1950)
Approx. Weight(kg)	850	1100	1400	1550	1550	2400 (3900)

※Speed regulation: optional solid-state electronic governor

(The frequency variation rate is within ±3% and within ±0.25% under steady load.)

※Length × Width × Height × Unit weight () indicates the data of installing soundproof generator canopy.

Spec. Table



All Pictures shown are for illustration purpose only.

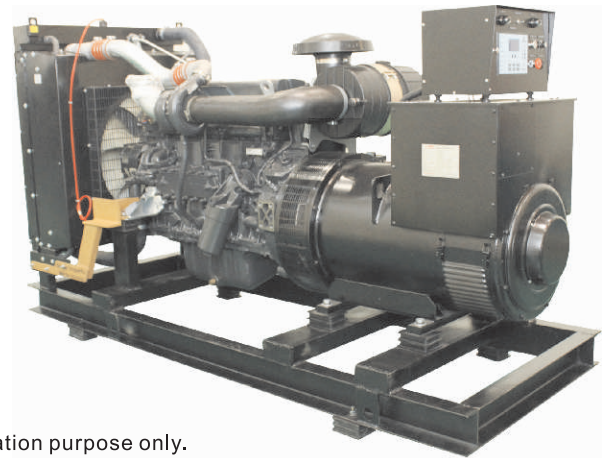
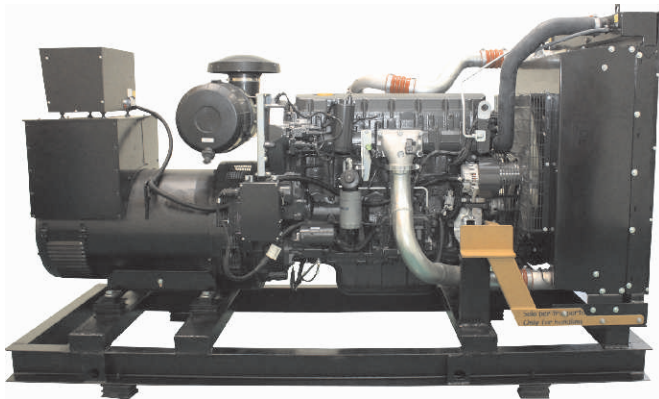
Gen. Set Model	EG-300-F	EG-400-F	EG-500-F	~ to be continued ~	~ to be continued ~	~ to be continued ~
Engine Model	C87TE4	C13TE6	CR16TE1W			
Gen. Set Power (kW/kVA)	300 kW 375 kVA	400 kW 500 kVA	500 kW 625 kVA			
Frequency/R.P.M.						
Engine Power	342 kW 458 HP 465 PS	490 kW 657 HP 666 PS	601 kW 806 HP 817 PS			
Tier of Emission Standard	Non					
No. of Cylinders	L-6					
Aspiration	Turbocharged air to air aftercooled					
Speed Regulation	Microcomputer control (Common rail direct)					
Cooling	Fan cooled radiator					
Displacement(L)	8.7	12.88	15.9			
Fuel consumption(L/h)	83.5	112	143.0			
Gen. set diesel Consumption(L/h)	80.9	105.7	130.5			
Starting voltage	24 V					
Battery type	120 Ah x 1		210 Ah x2			
Length(mm)	2850	3100	3300			
Width(mm)	1050	1250	1100			
Height(mm)	1650	1630	1850			
Approx. Weight(kg)	2500	3250	3650			

※Speed regulation: optional solid-state electronic governor

(The frequency variation rate is within ±3% and within ±0.25% under steady load.)

※Length × Width × Height × Unit weight () indicates the data of installing soundproof generator canopy.

Spec. Table



All Pictures shown are for illustration purpose only.

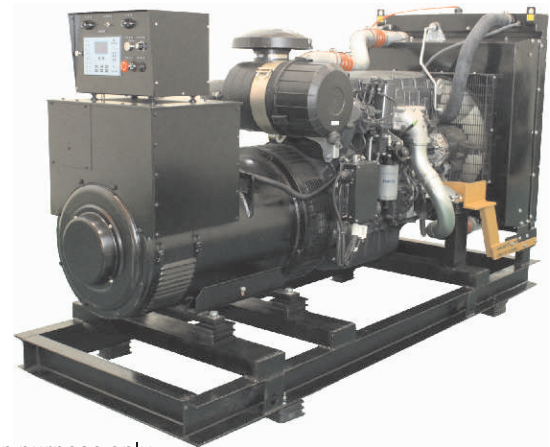
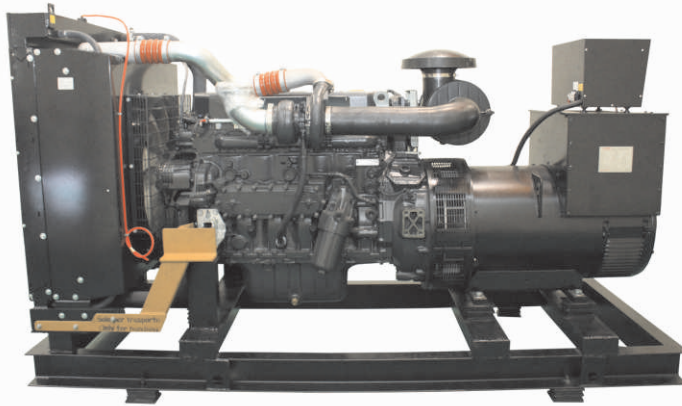
Gen. Set Model	EG-30-F1-A	EG-40A-F-A	EG-40B-F-A	EG-100-F-X	EG-150-F-X	EG-200-FM-A
Engine Model	N45AM1A	N45SM1A	N45AM1A	N67TM1X	N67TE1X	N67TE2A
Gen. Set Power (kW/kVA)	30 kW 37.5 kVA	40 kW 50 kVA	40 kW 50 kVA	100 kW 125 kVA	150 kW 187.5 kVA	200 kW 250 kVA
Frequency/R.P.M.	60 Hz 1800 rpm					
Engine Power	52 kW 70 HP 71 PS	67 kW 90 HP 91 PS	52 kW 70 HP 71 PS	148 kW 198 HP 201 PS	172 kW 231 HP 234 PS	223 kW 299 HP 303 PS
Tier of Emission Standard	T2	T2	T2	T3	T3	T2
No. of Cylinders	L-4			L-6		
Aspiration	Naturally aspirated	Turbocharged	Naturally aspirated	Turbocharged air to air aftercooled		
Speed Regulation	Mechanical type				Microcomputer control (Common rail direct)	
Cooling	Fan cooled radiator					
Displacement(L)	4.5	4.5	4.5	6.7	6.7	6.7
Fuel consumption(L/h)	13.5	16.9	13.5	38.0	42.0	53.6
Gen. set diesel Consumption(L/h)	9.7	12.1	12.5	30.4	41.9	53.4
Starting voltage	12 V					
Battery type	120 Ah x 1					
Length(mm)	1700(2400)	1700(2400)	1700	2300	2500/2660	2500
Width(mm)	750(1000)	750(1000)	750	750	750/870	800
Height(mm)	1200(1350)	1200(1350)	1200	1400	1425	1450
Approx. Weight(kg)	650(1150)	820(1320)	770	1260	2250	1600

※Speed regulation: optional solid-state electronic governor

(The frequency variation rate is within ±3% and within ±0.25% under steady load.)

※Length × Width × Height × Unit weight () indicates the data of installing soundproof generator canopy.

Spec. Table



All Pictures shown are for illustration purpose only.

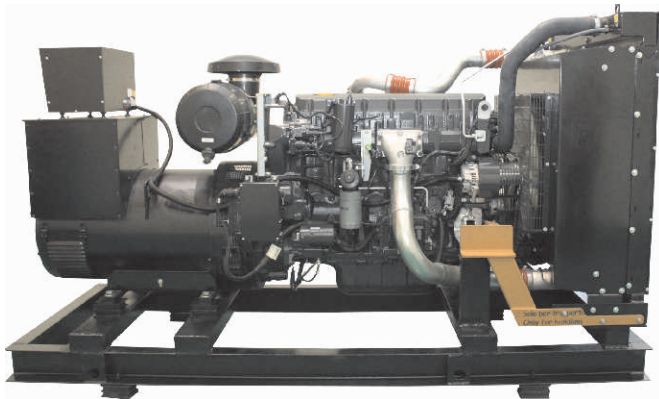
Gen. Set Model	EG-250-FM-X	EG-300-F-X	~ to be continued ~	~ to be continued ~	~ to be continued ~	~ to be continued ~
Engine Model	C87TE1D	C13TE3X				
Gen. Set Power (kW/kVA)	250 kW 312.5 kVA	300 kW 375 kVA				
Frequency/R.P.M.			60 Hz	1800 rpm		
Engine Power	290 kW 389 HP 394 PS	395 kW 529 HP 537 PS				
Tier of Emission Standard	T3	T3				
No. of Cylinders	L-6					
Aspiration	Turbocharged air to air aftercooled					
Speed Regulation	Microcomputer control (Common rail direct)	Microcomputer control (EUI/EUP)				
Cooling	Fan cooled radiator					
Displacement(L)	8.7	12.88				
Fuel consumption(L/h)	72.3	102.3				
Gen. set diesel Consumption(L/h)	69.8	89.7				
Starting voltage	24 V					
Battery type	120 Ah x 2					
Length(mm)	2700	3100				
Width(mm)	1100	1250				
Height(mm)	1600	1600				
Approx. Weight(kg)	2300	2700				

※Speed regulation: optional solid-state electronic governor

(The frequency variation rate is within ±3% and within ±0.25% under steady load.)

※Length × Width × Height × Unit weight () indicates the data of installing soundproof generator canopy.

Spec. Table



All Pictures shown are for illustration purpose only.

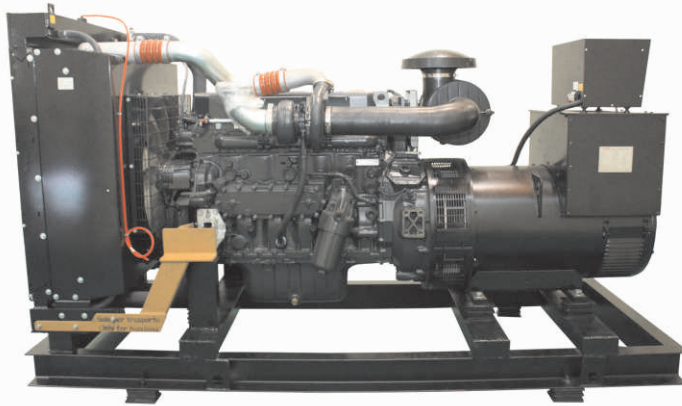
Gen. Set Model	EG-40-F-A	EG-50-F-A	EG-60-F-A	EG-80-F-A	EG-100-F-A	EG-125-F-A
Engine Model	F32SM1A	N45SM1A	N45SM2A	N45TM1A	N67TM2A	N67TM2A
Gen. Set Power (kW/kVA)	40 kW 50 kVA	50 kW 62.5 kVA	60 kW 75 kVA	80 kW 100 kVA	100 kW 125 kVA	125 kW 156.25 kVA
Frequency/R.P.M.	60 Hz 1800 rpm					
Engine Power	49.5 kW 66 HP 67 PS	67 kW 90 HP 91 PS	74 kW 99 HP 101 PS	98 kW 131 HP 133 PS	148 kW 198 HP 201 PS	148 kW 198 HP 201 PS
Tier of Emission Standard	Tier 2					
No. of Cylinders	L-4			L-6		
Aspiration	Turbocharged			Turbocharged air to air aftercooled		
Speed Regulation	Mechanical type: The frequency variation rate is within $\pm 5\%$ and within $\pm 1\%$ under steady load.					
Cooling	Fan cooled radiator					
Displacement(L)	3.2	4.5		6.7		
Fuel consumption(L/h)	13.3	16.9	19.6	25.7	38.1	38.1
Gen. set diesel Consumption(L/h)	12.8	14.9	18.5	24.3	30.4	37.3
Starting voltage	12 V					
Battery type	120 Ah x 1					
Length(mm)	1700	1800 (2400)	1850 (2400)	2000	2400	2400
Width(mm)	750	750 (1000)	750 (1000)	800	750	750
Height(mm)	1140	1250 (1350)	1250 (1350)	1300	1400	1400
Approx. Weight(kg)	740	900 (1400)	950 (1450)	1100	1300	1400

※Speed regulation: optional solid-state electronic governor

(The frequency variation rate is within $\pm 3\%$ and within $\pm 0.25\%$ under steady load.)

※Length x Width x Height x Unit weight () indicates the data of installing soundproof generator canopy.

Spec. Table



All Pictures shown are for illustration purpose only.

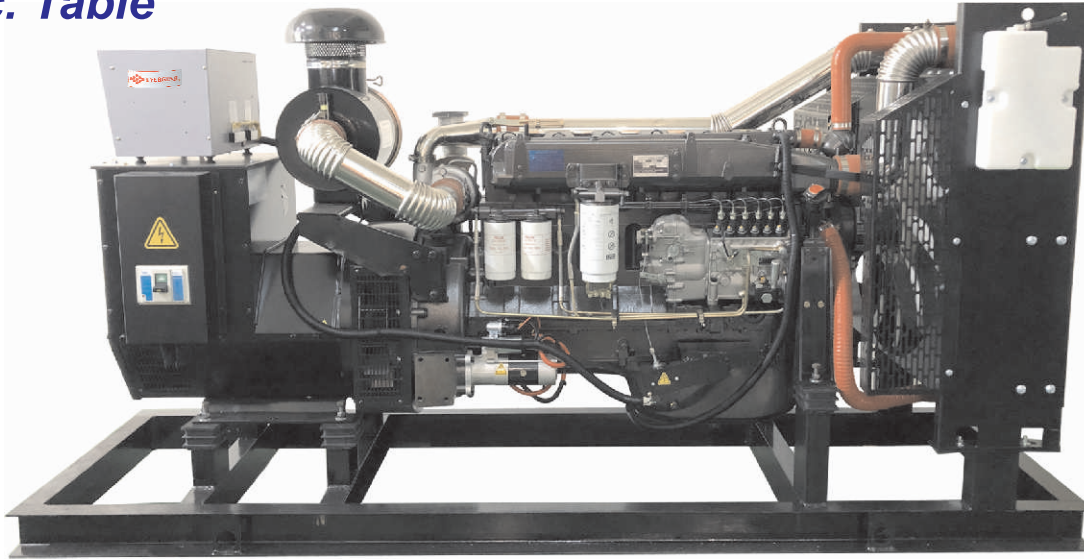
Gen. Set Model	EG-150-F-A	EG-200-F-A	EG-250-F-A	EG-300-F-A	EG-350-F-A	~ to be continued ~
Engine Model	N67TM3A	N67TE2A	C87TE1D	C13TE2A	C13TE3A	
Gen. Set Power (kW/kVA)	150 kW 187.5 kVA	200 kW 250 kVA	250 kW 312.5 kVA	300 kW 375 kVA	350 kW 437.5 kVA	
Frequency/R.P.M.	60 Hz 1800 rpm					
Engine Power	172.5 kW 231 HP 234 PS	223 kW 299 HP 303 PS	290 kW 389 HP 394 PS	385 kW 516 HP 523 PS	423 kW 567 HP 575 PS	
Tier of Emission Standard	Tier 2					
No. of Cylinders	L-6					
Aspiration	Turbocharged air to air aftercooled					
Speed Regulation	Mechanical type	Microcomputer control (Common rail direct)		Microcomputer control(EUI/EUP)		
Cooling	Fan cooled radiator					
Displacement(L)	6.7	6.7	8.7	12.88		
Fuel consumption(L/h)	44.2	53.6	72.3	91.0	108.7	
Gen. set diesel Consumption(L/h)	44.1	53.0	69.8	82.1	102.7	
Starting voltage	12 V		24 V			
Battery type	120 Ah x 1		120 Ah x 2			
Length(mm)	2500(3500)	2650	2800	3000	3100	
Width(mm)	750(1300)	750	1060	1130	1200	
Height(mm)	1450(1925)	1435	1605	1690	1900	
Approx. Weight(kg)	1500(2700)	1900	2400	2650	2800	

※Speed regulation: optional solid-state electronic governor

(The frequency variation rate is within ±3% and within ±0.25% under steady load.)

※Length × Width × Height × Unit weight () indicates the data of installing soundproof generator canopy.

Spec. Table



All Pictures shown are for illustration purpose only.

Gen. Set Model	EG-30-T	EG-40-T	EG-50-T	EG-60-T	EG-80-T
Engine Model	K4102D	K4102ZD	ZH4105ZD	R4105IZLD	R6105ZLD
Gen. Set Power (kW/kVA)	30 kW 37.5 kVA	40 kW 50 kVA	50 kW 62.5 kVA	60 kW 75 kVA	80 kW 100 kVA
Frequency/R.P.M.	60 Hz 1800 rpm				
Engine Power	41 kW 55 HP 56 PS	56.6 kW 76 HP 77 PS	67 kW 90 HP 91 PS	83 kW 111 HP 113 PS	110 kW 147 HP 149 PS
No. of Cylinders	L-4				L-6
Aspiration	Naturally aspirated	Turbocharged			
Speed Regulation	Mechanical type: The frequency variation rate is within $\pm 5\%$ and within $\pm 1\%$ under steady load.				
Cooling	Fan cooled radiator				
Displacement(L)	3.76	3.76	3.93	4.5	6.49
Fuel consumption (g/kw.h)	226	226	226	226	224
Gen. set diesel Consumption(L/h)	10.0	12.9	16.1	19.1	25.0
Starting voltage	12 V			24 V	
Battery type	120 Ah x 1			120 Ah x 2	
Length(mm)	1600 (2200)	1700 (2400)	1800 [2000]	1950 (2600) [2000]	2300 (3000) [2400]
Width(mm)	750 (1000)	750 (1000)	700 [1000]	720 (1000) [1000]	720 (1200) [1000]
Height(mm)	1050 (1350)	1150 (1350)	1130 [1450]	1180 (1350) [1450]	1320 (1580) [1580]
Approx. Weight(kg)	650 (1150)	770 (1270)	860 [1260]	970 (1570) [1370]	1220 (2170) [1670]

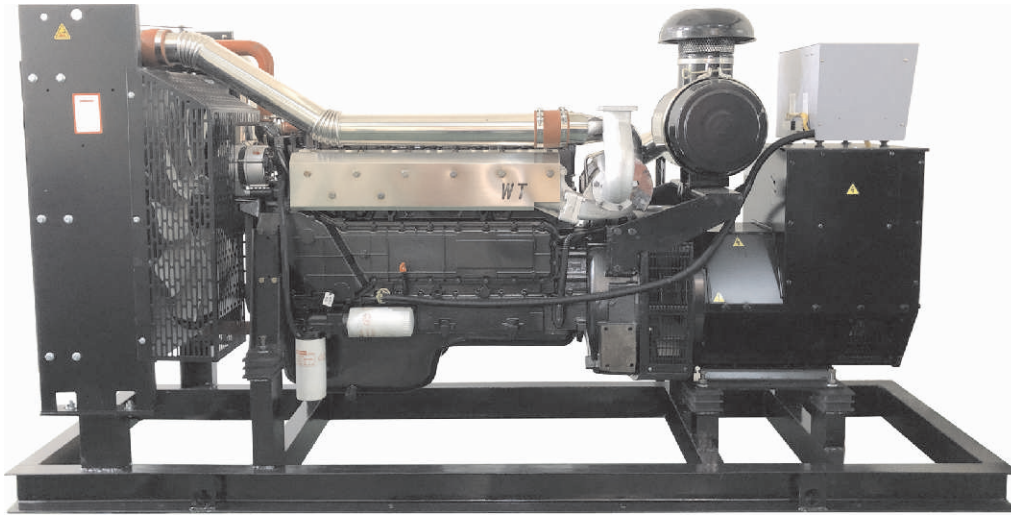
※Speed regulation: optional solid-state electronic governor

(The frequency variation rate is within $\pm 3\%$ and within $\pm 0.25\%$ under steady load.)

※Length × Width × Height × Unit weight () indicates the data of installing soundproof generator canopy.

※Length × Width × Height × Unit weight [] indicates the data of installing rainproof generator canopy.

Spec. Table



All Pictures shown are for illustration purpose only.

Gen. Set Model	EG-100-T	EG-125-T	EG-150-T	EG-200-T	EG-250-T EG-300-T
Engine Model	R6105AZLD	R6108IZLD	R6113AZLD	R6126ZLD	R618IZLD
Gen. Set Power (kW/kVA)	100 kW 125 kVA	125 kW 156 kVA	150 kW 187 kVA	200 kW 250 kVA	250 / 300 kW 312.5 / 375 kVA
Frequency/R.P.M.	60 Hz 1800 rpm				
Engine Power	125 kW 168 HP 170 PS	170 kW 228 HP 231 PS	190 kW 255 HP 258 PS	275 kW 369 HP 374 PS	370 kW 496 HP 503 PS
No. of Cylinders	L-6				
Aspiration	Turbocharged				
Speed Regulation	Mechanical type: The frequency variation rate is within $\pm 5\%$ and within $\pm 1\%$ under steady load.				
Cooling	Fan cooled radiator				
Displacement(L)	6.75	6.85	7.6	9.8	11.6
Fuel consumption (g/kw.h)	224	224	224	218	218
Gen. set diesel Consumption(L/h)	30.8	38.1	45.2	57.8	71.7 / 85.3
Starting voltage	24 V				
Battery type	120 Ah x 2				
Length(mm)	2300 [2400] {3000}	2300	2450	3000 {3800}	3000
Width(mm)	720 [1000] {1200}	930	930	880 {1300}	950
Height(mm)	1320 [1580] {2180}	1350	1550	1600 {2525}	1675
Approx. Weight(kg)	1260 [1710] {2160}	1350	1450	1970 {3270}	2280 / 2460

※Speed regulation: optional solid-state electronic governor

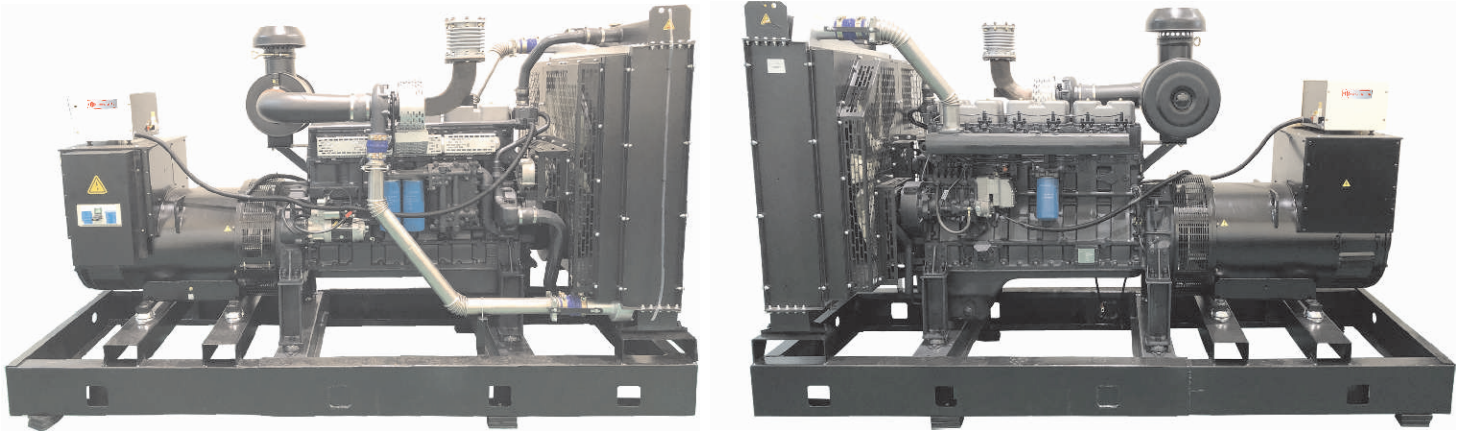
(The frequency variation rate is within $\pm 3\%$ and within $\pm 0.25\%$ under steady load.)

※Length × Width × Height × Unit weight () indicates the data of installing soundproof generator canopy.

※Length × Width × Height × Unit weight [] indicates the data of installing rainproof generator canopy.

※Length × Width × Height × Unit weight { } indicates the data of installing soundproof and rainproof generator canopy.

Spec. Table

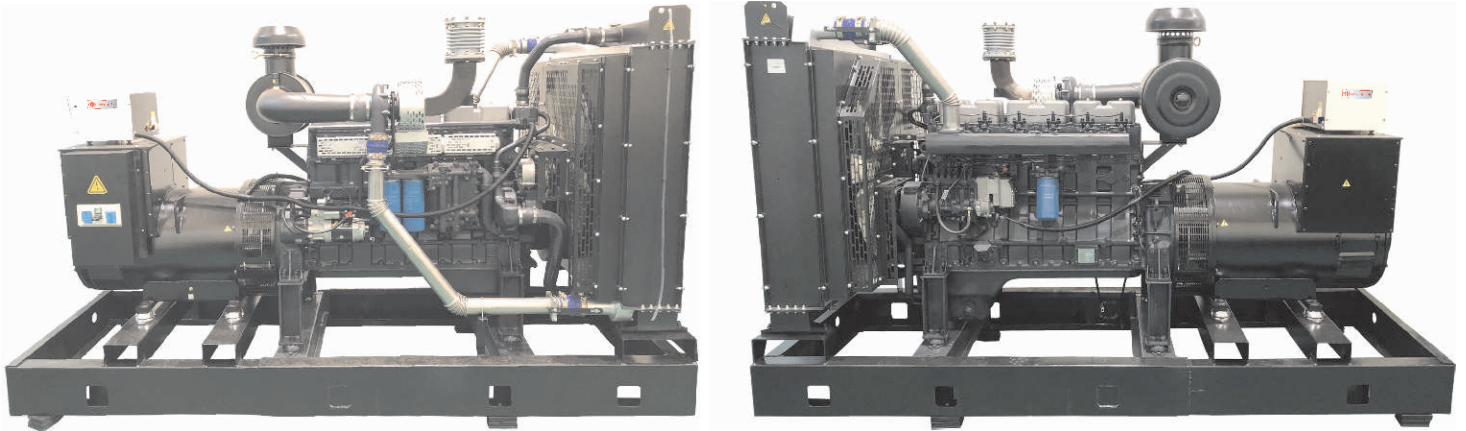


All Pictures shown are for illustration purpose only.

Gen. Set Model	EG-150-W	EG-200-W	EG-250-W	EG-300-W	EG-300A-W	EG-350-W
Engine Model	K12G231T	K12G351T	K12G420T	K12G476T	K16G612T	K25G700T
Gen. Set Power (kW/kVA)	150 kW 187.5 kVA	200 kW 250 kVA	250 kW 312.5 kVA	300 kW 375 kVA	300 kW 375 kVA	350 kW 437.5 kVA
Frequency/R.P.M.	60 Hz 1800 rpm					
Engine Power	171 kW 229 HP 232 PS	263 kW 353 HP 357 PS	310 kW 416 HP 421 PS	370 kW 496 HP 503 PS	450 kW 603 HP 611 PS	510 kW 684 HP 693 PS
No. of Cylinders	L-6					V-12
Aspiration	Turbocharged	Turbo & Intercooler				
Speed Regulation	Mechanical type	Electric Type: The frequency variation rate is within $\pm 3\%$ and within $\pm 0.25\%$ under steady load.				
Cooling	Fan cooled radiator					
Displacement(L)	12.88		14.16		14.8	26.6
Fuel consumption(L/h)	50	73	90	100	118	140
Gen. set diesel Consumption(L/h)	48.2	60.8	78.9	87.6	85.8	103.9
Starting voltage	24 V					
Battery type	120 Ah x 2					
Length(mm)	2730	3000	3150	3100 [3200]	3100	3310
Width(mm)	1150	1150	1140	1260 [1400]	1360	1780
Height(mm)	1585	1740	1700	1680 [2150]	1850	2150
Approx. Weight(kg)	2000	2300	2600	2800 [3600]	3000	3800

※Length × Width × Height × Unit weight () indicates the data of installing soundproof generator canopy.
 ※Length × Width × Height × Unit weight [] indicates the data of installing rainproof generator canopy.

Spec. Table

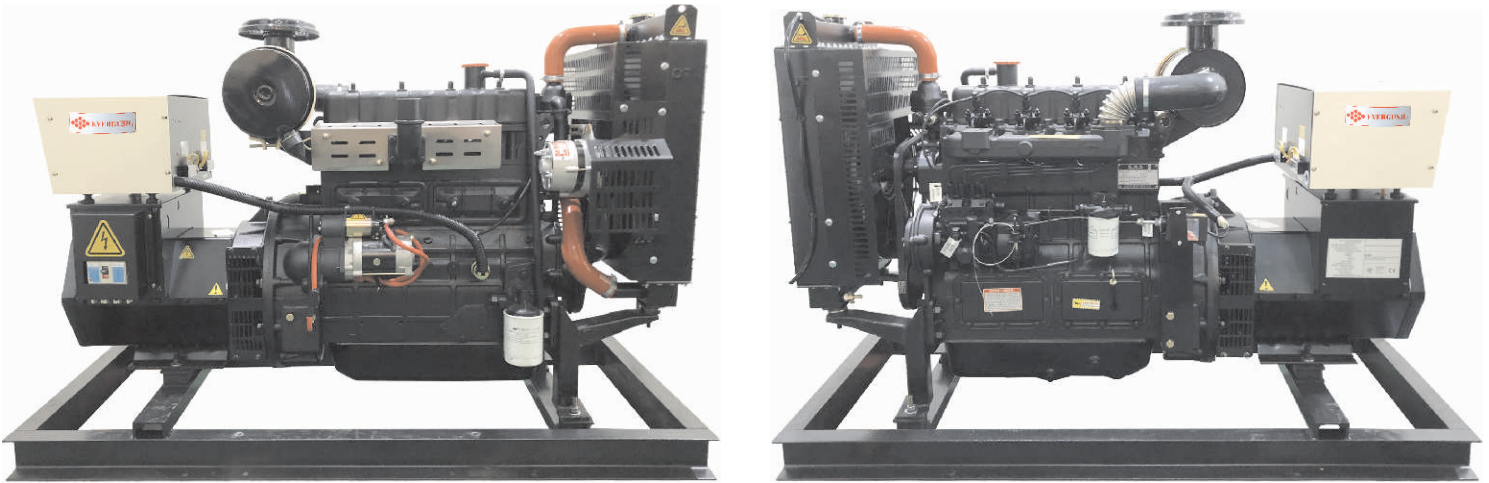


All Pictures shown are for illustration purpose only.

Gen. Set Model	EG-350A-W	EG-400-W	EG-500-W	EG-600-W	EG-750-W	~ to be continued ~
Engine Model	K16G612T	K25G700T	K25G829T	K25G897T	K29G1120T	
Gen. Set Power (kW/kVA)	350 kW 437.5 kVA	400 kW 500 kVA	500 kW 625 kVA	600 kW 750 kVA	750 kW 937.5 kVA	
Frequency/R.P.M.	60 Hz 1800 rpm					
Engine Power	450 kW 603 HP 611 PS	510 kW 684 HP 693 PS	610 kW 818 HP 829 PS	660 kW 885 HP 897 PS	820 kW 1099 HP 1114 PS	
No. of Cylinders	V-12					
Aspiration	Turbo & Intercooler					
Speed Regulation	Electric Type: The frequency variation rate is within $\pm 3\%$ and within $\pm 0.25\%$ under steady load.					
Cooling	Fan cooled radiator					
Displacement(L)	14.8	26.6			28.7	
Fuel consumption(L/h)	118	140	165	180	220	
Gen. set diesel Consumption(L/h)	92.2	117.7	143.8	172.8	211.6	
Starting voltage	24 V					
Battery type	120 Ah x 2			210 Ah x 2		
Length(mm)	3300	3500	3500	3600	4260	
Width(mm)	1360	1780	1750	1800	2010	
Height(mm)	1840	2060	2065	2170	2465	
Approx. Weight(kg)	3000	4000	4300	4450	5550	

※Length × Width × Height × Unit weight () indicates the data of installing soundproof generator canopy.
 ※Length × Width × Height × Unit weight [] indicates the data of installing rainproof generator canopy.

Spec. Table



All Pictures shown are for illustration purpose only.

Gen. Set Model	EG-30-H	EG-30A-H	EG-40-H	EG-50-H	EG-60-H
Engine Model	K4102D	K4102DHT	K4102ZD	ZH4105ZD	R4105IZLD
Gen. Set Power (kW/kVA)	30 kW 37.5 kVA	30 kW 37.5 kVA	40 kW 50 kVA	50 kW 62.5 kVA	60 kW 75 kVA
Frequency/R.P.M.	60 Hz 1800 rpm				
Engine Power	41 kW 55 HP 56 PS	41 kW 55 HP 56 PS	52 kW 70 HP 71 PS	62 kW 83 HP 84 PS	75 kW 101 HP 102 PS
No. of Cylinders	L-4				
Aspiration	Naturally aspirated		Turbocharged		
Speed Regulation	Mechanical type				
Cooling	Fan cooled radiator				
Displacement(L)	3.76	3.76	3.76	3.98	4.33
Fuel consumption (g/kw.h)	226	226	226	226	226
Gen. set diesel Consumption(L/h)	10.0	10.0	12.9	15.9	18.8
Starting voltage	12 V				24 V
Battery type	120 Ah x 1				120 Ah x 2
Length(mm)	1600	1600	1700	1800	1950
Width(mm)	750	750	750	700	720
Height(mm)	1140	1060	1190	1130	1170
Approx. Weight(kg)	600	600	730	800	900

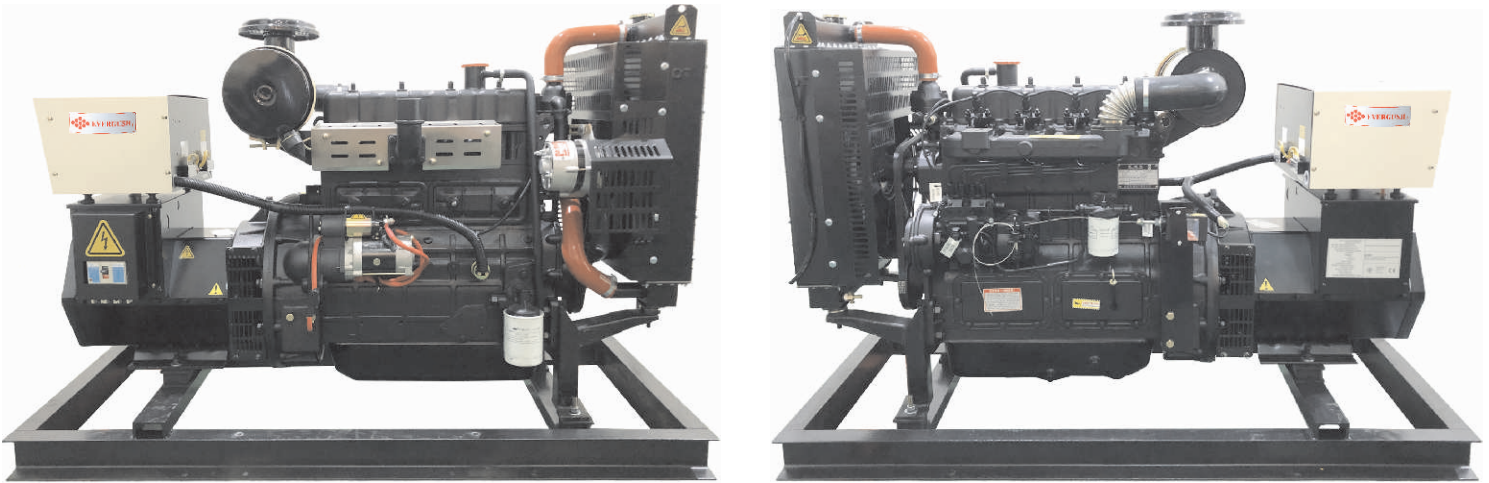
※Speed regulation: optional solid-state electronic governor

(The frequency variation rate is within ±3% and within ±0.25% under steady load.)

※Length × Width × Height × Unit weight () indicates the data of installing soundproof generator canopy.

※Length × Width × Height × Unit weight [] indicates the data of installing rainproof generator canopy.

Spec. Table



All Pictures shown are for illustration purpose only.

Gen. Set Model	EG-80-H	EG-80A-H	EG-100-H	EG-125-H	~ to be continued ~
Engine Model	R6105ZLD	R6105AZLD	R6105AZLD	R6108IZLD	
Gen. Set Power (kW/kVA)	80 kW 100 kVA	80 kW 100 kVA	100 kW 125 kVA	125 kW 156.26 kVA	
Frequency/R.P.M.	60 Hz 1800 rpm				
Engine Power	110 kW 147 HP 149 PS	121 kW 162 HP 164 PS	121 kW 162 HP 164 PS	145 kW 194 HP 197 PS	
No. of Cylinders	L-6				
Aspiration	Turbocharged				
Speed Regulation	Mechanical type				
Cooling	Fan cooled radiator				
Displacement(L)	6.49	6.49	6.49	6.75	
Fuel consumption (g/kw.h)	224	224	224	224	
Gen. set diesel Consumption(L/h)	24.5	24.5	30.2	37.5	
Starting voltage	24 V				
Battery type	120 Ah x 2				
Length(mm)	2300	2300	2300	2300	
Width(mm)	720	720	720	930	
Height(mm)	1350	1340	1350	1350	
Approx. Weight(kg)	1160	1160	1200	1300	

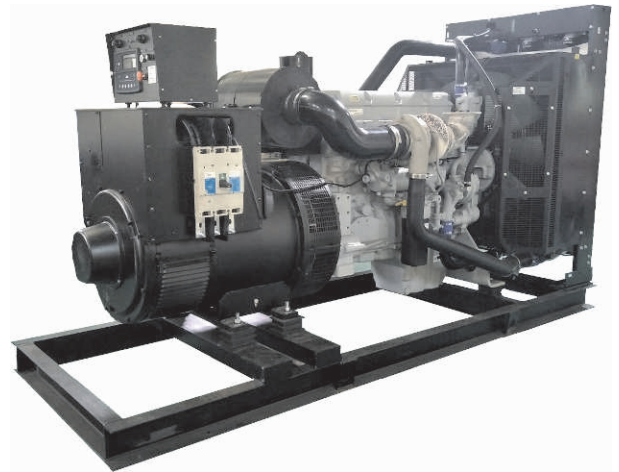
※Speed regulation: optional solid-state electronic governor

(The frequency variation rate is within ±3% and within ±0.25% under steady load.)

※Length × Width × Height × Unit weight () indicates the data of installing soundproof generator canopy.

※Length × Width × Height × Unit weight [] indicates the data of installing rainproof generator canopy.

Spec. Table

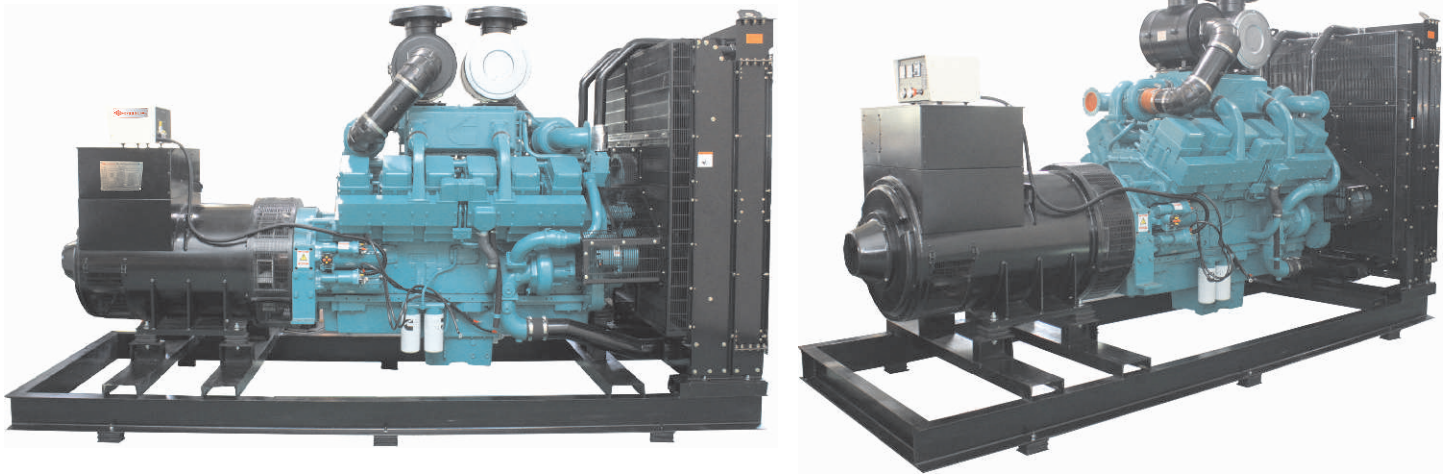


All Pictures shown are for illustration purpose only.

Gen. Set Model	EG-400-P	EG-500-P	EG-600-P	EG-1500-P	~ to be continued ~
Engine Model	2206D-E13TAG3	2506C-E15TAG4	2806C-E18TAG3	4012-46TAG3	
Gen. Set Power (kW/kVA)	400 kW 500 kVA	500 kW 625 kVA	600 kW 750 kVA	1500 kW 1875 kVA	
Frequency/R.P.M.	60 Hz 1800 rpm				
Engine Power	462 kW 619 HP 628 PS	623 kW 835 HP 846 PS	678.2 kW 909 HP 921 PS	1643 kW 2202 HP 2232 PS	
No. of Cylinders	L-6				
Aspiration	Turbocharged air to air aftercooled				
Speed Regulation	Electric Type: The frequency variation rate is within $\pm 3\%$ and within $\pm 0.25\%$ under steady load.				
Cooling	Fan cooled radiator				
Displacement(L)	12.5	15.2	18.13	45.842	
Fuel consumption(L/h)	105.0	146.0	158.0	390.0	
Gen. set diesel Consumption(L/h)	101.2				
Starting voltage	24 V				
Battery type	120 Ah x 2	210 Ah x 2			
Length(mm)	3300	3500	3500	5400	
Width(mm)	1200	1200	1500	2100	
Height(mm)	1900	2050	2100	3100	
Approx. Weight(kg)	3300	4000	4650	9550	

※Length × Width × Height × Unit weight () indicates the data of installing soundproof generator canopy.

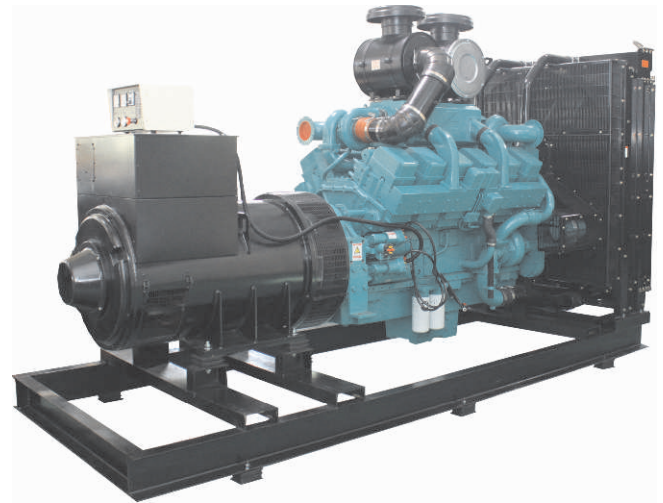
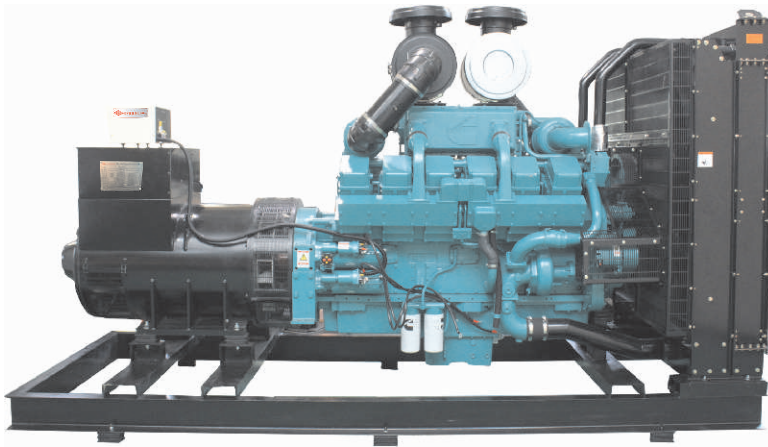
Spec. Table



All Pictures shown are for illustration purpose only.

Gen. Set Model	EG-150-QC	EG-200-C	EG-300-C	EG-500-C	EG-600-C	EG-750-QC
Engine Model	QSK7-G5	6LTAA8.9-G2	NTA855-G2	KTA19-G4	KTAA19-G7	QSK23-G6
Gen. Set Power (kW/kVA)	150 kW 187.5 kVA	200 kW 250 kVA	300 kW 375 kVA	500 kW 625 kVA	600 kW 750 kVA	750 kW 937.5 kVA
Frequency/R.P.M.	60 Hz		1800 rpm			
Engine Power	242 kW 324 HP 329 PS	258 kW 346 HP 351 PS	347 kW 465 HP 471 PS	563 kW 755 HP 765 PS	664 kW 890 HP 902 PS	854 kW 1145 HP 1160 PS
No. of Cylinders	L-6					
Aspiration	Turbocharged air to air aftercooled					
Speed Regulation	Microcomputer control	Electric type				
Cooling	Fan cooled radiator					
Displacement(L)	6.69	8.9	14.0	18.9	18.9	23.15
Fuel consumption(L/h)	59.0	66.0	89.0	136.0	161.2	195.0
Gen. set diesel Consumption(L/h)	44.3	50.1	75.5	117.6	157.3	186.4
Starting voltage	24 V					
Battery type	120 Ah x 2				210 Ah x 2	
Length(mm)	2400	2600	3100	3500	3800	4200
Width(mm)	860	1000	1200	1360	1800	1660
Height(mm)	1400	1535	1800	2100	2275	2280
Approx. Weight(kg)	1200	1600	2900	4200	4400	5850

Spec. Table



All Pictures shown are for illustration purpose only.

Gen. Set Model	EG-800-C	~ to be continued ~	~ to be continued ~	~ to be continued ~	~ to be continued ~	~ to be continued ~
Engine Model	KTA38-G2					
Gen. Set Power (kW/kVA)	800 kW 1000 kVA					
Frequency/R.P.M.	60 Hz		1800 rpm			
Engine Power	895 kW 1200 HP 1216 PS					
No. of Cylinders	V-12					
Aspiration	Turbocharged air to air aftercooled					
Speed Regulation	Electric type					
Cooling	Fan cooled radiator					
Displacement(L)	37.8					
Fuel consumption(L/h)	225.0					
Gen. set diesel Consumption(L/h)	219.7					
Starting voltage	24 V					
Battery type	210 Ah x 2					
Length(mm)	4300(6060)					
Width(mm)	1700(2440)					
Height(mm)	2500(2640)					
Approx. Weight(kg)	6960(13500)					